



Matthew G. Bevin
Governor

**COMMONWEALTH OF KENTUCKY
TRANSPORTATION CABINET**

Frankfort, Kentucky 40622
www.transportation.ky.gov/

Greg Thomas
Secretary

May 18, 2018

CALL NO. 201
CONTRACT ID NO. 181212
ADDENDUM # 1

**Subject: DAVIESS-OHIO COUNTIES, 121GR18D012 - NHPP
Letting May 25, 2018**

- (1) Revised - Cover Page - Page 1 of 447
- (2) Revised - Page 4 of 447
- (3) Revised - Driving Lane Patching Detail Sheet - Page 24 of 447
- (4) Revised - General Summary- Pages 34-35 of 447
- (5) Revised - General Tabulation Sheet Ohio County- Pages 36-37 of 447
- (6) Revised - General Tabulation Sheet Daviess County- Pages 38-39 of 447
- (7) Revised - Paving Summary- Page 47 of 447
- (8) Revised - Lighting Summary- Page 59 of 447
- (9) Revised - Lighting Summary- Page 171 of 447
- (10) Revised - Exit 43 Bulb Replacement Sheets - Pages 181-183 of 447
- (11) Revised - Exit 72 Bulb Replacement Sheets - Page 184 of 447
- (12) Revised - Special Note for Liquidated Damages- Page 213 of 447
- (13) Added - Special Note for Ditching- Page 224(a) of 447
- (14) Revised - Material Summary - Pages 381-387 of 447
- (15) Revised - Proposal Bid Items - Pages 442-447 of 447

Proposal revisions are available at <http://transportation.ky.gov/Construction-Procurement/>.



An Equal Opportunity Employer M/F/D

If you have any questions, please contact us at 502-564-3500.

Sincerely,

A handwritten signature in black ink that reads "Rachel Mills". The signature is written in a cursive style with a large, looped initial "R".

Rachel Mills, P.E.
Director
Division of Construction Procurement

RM:mr
Enclosures



CALL NO. 201

CONTRACT ID. 181212

DAVISS - OHIO COUNTIES

FED/STATE PROJECT NUMBER 121GR18D012 - NHPP

DESCRIPTION I-165 IN DAVIESS & OHIO COUNTIES

WORK TYPE ASPHALT REHAB INTERSTATE/PARKWAY

PRIMARY COMPLETION DATE 6/30/2019

LETTING DATE: May 25,2018

Sealed Bids will be received electronically through the Bid Express bidding service until 10:00 AM EASTERN DAYLIGHT TIME May 25,2018. Bids will be publicly announced at 10:00 AM EASTERN DAYLIGHT TIME.

NO PLANS ASSOCIATED WITH THIS PROJECT.

DBE CERTIFICATION REQUIRED - 13%

REQUIRED BID PROPOSAL GUARANTY: Not less than 5% of the total bid.

ADMINISTRATIVE DISTRICT - 02

CONTRACT ID - 181212

121GR18D012 - NHPP

COUNTY - DAVIESS

PCN - DE0301651812

NHPP 0031 (019)

I-65 IN DAVIESS COUNTY (MP 61.557) I-65 SPUR CORRIDOR; MODERNIZATION OF EXISTING NATCHER PARKWAY FROM THE OHIO COUNTY LINE TO THE US 60 INTERCHANGE IN OWENSBORO (MP 72.264), A DISTANCE OF 010.71 MILES.ASPHALT REHAB INTERSTATE/PARKWAY SYP NO. 02-02092.10.

GEOGRAPHIC COORDINATES LATITUDE 37:40:22.00 LONGITUDE 87:01:34.60

COUNTY - OHIO

PCN - DE09201651812

NHPP 0031 (019)

I-165 IN OHIO COUNTY (MP 37.143) UPGRADE I-65 SPUR CORRIDOR; MODERNIZATION OF EXISTING NATCHER PARKWAY FROM THE OHIO-BUTLER COUNTY LINE TO DAVIESS COUNTY LINE (MP 61.557), A DISTANCE OF 024.41 MILES.ASPHALT REHAB INTERSTATE/PARKWAY SYP NO. 02-02092.10.

GEOGRAPHIC COORDINATES LATITUDE 37:27:06.08 LONGITUDE 86:52:35.50

COMPLETION DATE(S):

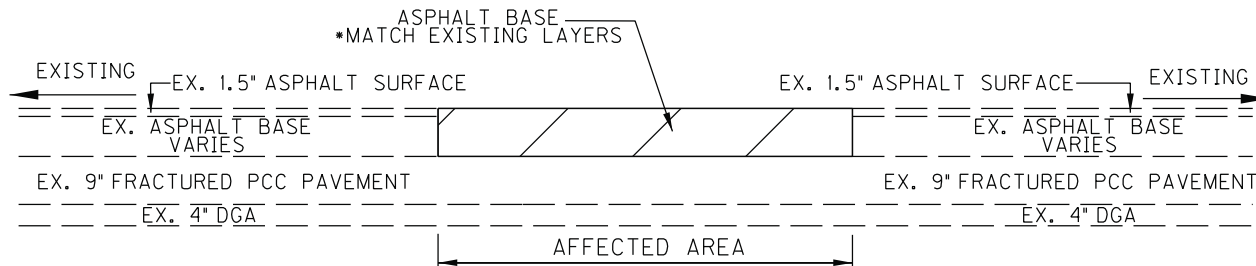
COMPLETED BY 11/15/2018

COMPLETED BY 06/30/2019

SEE SPECIAL NOTE FOR
INTERMEDIATE ITEMS OF WORK

APPLIES TO ENTIRE CONTRACT

DRIVING LANE PATCHING DETAIL
 DISTRICT 2
 OHIO AND DAVIESS COUNTIES
 MP 49.80 - MP 72.26



- ① THE AFFECTED DEGRADED PAVEMENT WILL BE EITHER SAW CUT OR MILLED AND REMOVED DOWN TO THE BROKEN AND SEATED CONCRETE.
- ② ORIGINAL ASPHALT WILL BE REPLACED USING APPROPRIATE PAVEMENT DESIGN.
- ③ "DRIVING LANE PATCHING" LOCATIONS WILL BE DETERMINED BY THE ENGINEER IN THE FIELD. BEFORE REMOVAL OF THE EXISTING MATERIAL, SAW CUTS SHALL BE MADE IN SOUND PAVEMENT.
- ④ DO NOT BEGIN SUBSEQUENT MILLING AND INLAY OPERATIONS BEFORE TRAFFIC HAS BEEN ALLOWED TO DRIVE OVER THE COMPLETED PATCHES FOR AT LEAST TWO WEEKS TO ALLOW FOR CONSOLIDATION.
- ⑤ ASPHALT BASE MAY BE UTILIZED IN PLACE OF A SURFACE LAYER DURING PATCHING. THIS BASE WILL BE MILLED AND INLAYED WITH 1.5" ASPHALT SURFACE DURING MAINLINE OPERATIONS.

*EXISTING / PROPOSED PAVEMENT LAYERS

PAVEMENT DESIGN MP 49.80 - MP 61.600	
1.50" SURFACE	1.5" CL4 ASPH SURF 0.50A PG76-22
7.5" ASPH BASE	3.5" CL4 ASPH BASE 1.00D PG64-22
	4.0" CL4 ASPH BASE 1.00D PG64-22

PAVEMENT DESIGN MP 61.600 - MP 65.910	
1.50" SURFACE	1.5" CL3 ASPH SURF 0.50A PG76-22
4.5" ASPH BASE	4.5" CL3 ASPH BASE 1.00D PG64-22

PAVEMENT DESIGN MP 65.910 - MP 72.260	
1.50" SURFACE	1.5" CL3 ASPH SURF 0.50A PG76-22
9.5" ASPH BASE	3.0" CL3 ASPH BASE 1.00D PG64-22
	3.0" CL3 ASPH BASE 1.00D PG64-22
	3.5" CL3 ASPH BASE 1.00D PG64-22

I-165 CONVERSION
KYTC - DISTRICT 2
MP 37.2 TO MP 72.3
ITEM NO. 2-2092

DISTRICT 2 GENERAL SUMMARY

ITEM NUMBER	ITEM	UNIT	OHIO COUNTY				DAVISS COUNTY				DISTRICT 2 TOTAL	
			OHIO CORRIDOR	MP 49.9 P/VMIT RPLCMNT	REHAB MP50.0 - MP61.5	OHIO SUBTOTAL	DAVISS CORRIDOR	REHAB MP61.5 - MP72.2	DAVISS SUBTOTAL			
02599	FABRIC-GEOTEXTILE TYPE IV	SQYD	200			200	100				100	300
02650	MAINTAIN & CONTROL TRAFFIC	LS				1					1	2
02671	PORTABLE CHANGEABLE MESSAGE SIGN	EACH	4			4	4				4	8
02676	MOBILIZATION FOR MILL & TEXT	LS			1	1			1		1	2
02677	ASPHALT PAVE MILLING & TEXTURING	TON	1411		35894	37305	879		33133		34012	71317
02696	SHOULDER RUMBLE STRIPS	LF	400	14296	244732	259428	1200		225907		227107	486535
02701	TEMP SILT FENCE	LF	7920	1000		8920	8570				8570	17490
02703	SILT TRAP TYPE A	EACH	14	2		16	13				13	29
02704	SILT TRAP TYPE B	EACH	14	2		16	13				13	29
02705	SILT TRAP TYPE C	EACH	14	2		16	13				13	29
02705	SILT TRAP TYPE C-MEDIAN	EACH	74			74	68				68	142
02706	CLEAN SILT TRAP TYPE A	EACH	14	2		16	13				13	29
02707	CLEAN SILT TRAP TYPE B	EACH	14	2		16	13				13	29
02708	CLEAN SILT TRAP TYPE C	EACH	14	2		16	13				13	29
02708	CLEAN SILT TRAP TYPE C-MEDIAN	EACH	74			74	68				68	142
02726	STAKING	LS				1					1	2
02775	ARROW PANEL	EACH	3	2		5	3				3	8
02898	RELOCATE CRASH CUSHION	EACH	8			8	6				6	14
02929	CRASH CUSHION IX	EACH	4	2		6	12				12	18
03171	CONCRETE BARRIER WALL TYPE 9T	LF	8880			8880	4440				4440	13320
03260	CLEAN ROADWAY DRAINS	EACH			9	9			9		9	18
03262	CLEAN PIPE STRUCTURE	EACH	12			12	11				11	23
04700	POLE 30 FT MTG HT	EACH					1				1	1
04714	POLE 120 FT MTG HT HIGH MAST	EACH	4			4						4
04721	BRACKET 6 FT	EACH					1				1	1
04740	POLE BASE	EACH					1				1	1
04750	TRANSFORMER BASE	EACH					1				1	1
04780	FUSED CONNECTOR KIT	EACH					156				156	156
04793	CONDUIT-1/4 IN	LF					12310				12310	12310
04800	MARKER	EACH	28			28						28
04820	TRENCHING AND BACKFILLING	LF	7850			7850	12310				12310	20160
04834	WIRE-NO. 6	LF					38580				38580	38580
04862	CABLE-NO. 4/3C DUCTED	LF	8150			8150						8150
05950	EROSION CONTROL BLANKET	SQYD	63888	500		64388	59664				59664	124052
05952	TEMP MULCH	SQYD	42592	1000		43592	39776				39776	83368
05953	TEMP SEEDING AND PROTECTION	SQYD	31944	1000		32944	29832				29832	62776
05963	INITIAL FERTILIZER	TON	6.6	0.1		6.7	6.2				6.2	12.9
05964	20-10-10 FERTILIZER	TON	3.5	0.1		3.6	3.2				3.2	6.8
05985	SEEDING AND PROTECTION	SQYD			581	581			537		537	1118
05992	AGRICULTURAL LIMESTONE	TON	40	1		41	37				37	78
06511	PAVE STRIPING-TEMP PAINT-6 IN*	LF	84290			84290	69670				69670	153960
06513	PAVE STRIPING-TEMP PAINT-12 IN	LF	1200			1200						1200
06515	PAVE STRIPING-PERM PAINT-6 IN*	LF	279200	17091		296291	257000				257000	553291
06517	PAVE STRIPING-PERM PAINT-12 IN	LF		621		621	2015				2015	2636
06569	PAVE MARKING-THERMO CROSS-HATCH	SQFT		315		315						315
06572	PAVE MARKING-DOTTED LANE EXTEN	LF		438		438						438
08500	APPROACH SLAB-BRIDGE MP 51.2	SY	333.33			333.33						333.33
08500	APPROACH SLAB-BRIDGE MP 64.5	SY					333.33				333.33	333.33
08500	APPROACH SLAB-BRIDGE MP 64.8	SY					333.33				333.33	333.33
08500	APPROACH SLAB-BRIDGE MP 65.0	SY					333.33				333.33	333.33
08903	CRASH CUSHION TY VI CLASS BT TL3	EACH	4			4	7				7	11

*INCLUDES QUANTITY FOR BOTH MILL AND INLAY AS WELL AS QUANTITY FOR I-165 CONVERSION ITEMS

I-165 CONVERSION
KYTC - DISTRICT 2
MP 37.2 TO MP 72.3
ITEM NO. 2-2092

DISTRICT 2 GENERAL SUMMARY

ITEM NUMBER	ITEM	UNIT	OHIO COUNTY				DAVISS COUNTY				DISTRICT 2 TOTAL	
			OHIO CORRIDOR	MP 49.9 P/VMIT RPLCMNT	REHAB MP50.0 - MP61.5	OHIO SUBTOTAL	DAVISS CORRIDOR	REHAB MP61.5 - MP72.2	DAVISS SUBTOTAL			
10020NS	FUEL ADJUSTMENT	DOLL		52094	56778	108872					56778	165650
10030NS	ASPHALT ADJUSTMENT	DOLL		84615	145621	230236					142610	372846
20071EC	JOINT ADHESIVE	LF			247104	247104					227251	474355
20391NS835	ELECTRICAL JUNCTION BOX TYPE A	EACH					8				8	8
20410ED	MAINTAIN LIGHTING	LS	1			1					1	2
20411ED	LAW ENFORCEMENT OFFICER	HOUR	1200			1200					1000	2200
20758ED	REMOVE AND RESET PERF PIPE HEADWALL	EACH			785	785				725	725	1510
21543EN	BORE AND JACK CONDUIT	LF	300			300					310	610
21597EN	REMOVE PERF PIPE HEADWALL	EACH			200	200					180	380
21802EN	G/R STEEL W BEAM-S FACE (7 FT POST)	LF	55137.5	2162.5		57300.0				58850.0	58850.0	116150.0
22664EN	WATER BLASTING EXISTING STRIPE	LF	62130			62130					49240	111370
22883EN	CONCRETE WEDGE CURB	LF	16750			16750					6225	22975
23161EN	POLE BASE-HIGH MAST	CUYD	35			35						35
23496EC	MEDIAN CROSSEVER REMOVAL MP 41.2	EACH	1			1						1
23496EC	MEDIAN CROSSEVER REMOVAL MP 42.3	EACH	1			1						1
23496EC	MEDIAN CROSSEVER REMOVAL MP 44.4	EACH	1			1						1
23496EC	MEDIAN CROSSEVER REMOVAL MP 50.9	EACH	1			1						1
23496EC	MEDIAN CROSSEVER REMOVAL MP 67.0	EACH	1			1						1
23496EC	MEDIAN CROSSEVER REMOVAL MP 68.2	EACH	1			1						1
23496EC	MEDIAN CROSSEVER REMOVAL MP 72.0	EACH	1			1						1
23791EC	PAVE STRIPING-CHEVRON MARKINGS	SQFT	8850			8850						8850
24096EC	REMOVE AND RESET END TREATMENT	EACH										
24489EC	INLAID PAVEMENT MARKER	EACH		90	1545	1635				1421	1421	3056
24605ED	MEDIAN CROSSEVER RELOCATION MP 57.7	EACH	1			1						1
24906ED	REGRADE SLOPE	SQYD			581	581				537	537	1118
24979ED	MEDIAN CROSSEVER REGRADE MP 49.4	EACH	1			1						1
24979ED	MEDIAN CROSSEVER REGRADE MP 54.1	EACH	1			1						1
24979ED	MEDIAN CROSSEVER REGRADE MP 61.6	EACH	1			1						1
24589ED	LED LUMINAIRE	EACH									74	74
24662EC	CLEAN	EACH	74			74					68	142
24749EC	HIGH MAST LED LUMINAIRE	EACH	98			98						98
24984EC	TRANSVERSE IN-LANE RUMBLE STRIPS	EACH									6	6

*INCLUDES QUANTITY FOR BOTH MILL AND INLAY AS WELL AS QUANTITY FOR I-165 CONVERSION ITEMS

I-165 CONVERSION
KYTC - DISTRICT 2
MP 37.2 TO MP 72.3
ITEM NO. 2-2092**OHIO COUNTY CORRIDOR GENERAL TABULATION**

ITEM CODE	ITEM	UNIT	TOTAL PROJECT	NOTES
00212	CL2 ASPH BASE 1.00D PG64-22	TON	1411	FROM MOT TABULATION
01511	DROP BOX INLET TYPE 5D	EACH	2	
01690	FLUME INLET TYPE 1	EACH	4	FROM WEDGE CURB TABULATION
01691	FLUME INLET TYPE 2	EACH	37	FROM WEDGE CURB TABULATION
01890	ISLAND HEADER CURB TYPE 1	LF	300	
01982	DELINEATOR FOR GUARDRAIL M/W	EACH	1105	FROM GUARDRAIL TABULATION
01983	DELINEATOR FOR GUARDRAIL M/Y	EACH	23	FROM GUARDRAIL TABULATION
01984	DELINEATOR FOR BARRIER - WHITE	EACH	102	FROM MOT TABULATION
01985	DELINEATOR FOR BARRIER - YELLOW	EACH	102	FROM MOT TABULATION
02003	RELOCATE TEMP CONC BARRIER	LF	9700	FROM MOT TABULATION
02014	BARRICADE-TYPE III	EACH	14	FROM MOT TABULATION
02091	REMOVE PAVEMENT	SQYD	1067	
02159	TEMP DITCH	LF	7920	FROM EROS CTRL TABULATION
02160	CLEAN TEMP DITCH	LF	3960	FROM EROS CTRL TABULATION
02165	REMOVE PAVED DITCH	LF	1000	
02200	ROADWAY EXCAVATION	LF	335	
02223	GRANULAR EMBANKMENT	CUYD	100	
02237	DITCHING - SHOULDERS	LF	122366	
02237	DITCHING - MEDIAN	LF	61183	
02242	WATER	MGAL	1000	
02363	GUARDRAIL CONNECTOR TO BRIDGE END TY A	EACH	8	FROM GUARDRAIL TABULATION
02365	CRASH CUSHION TYPE IX-A	EACH	4	FROM GUARDRAIL TABULATION
02367	GUARDRAIL END TREATMENT TYPE 1	EACH	4	FROM GUARDRAIL TABULATION
02369	GUARDRAIL END TREATMENT TYPE 2A	EACH	58	FROM GUARDRAIL TABULATION
02381	REMOVE GUARDRAIL	LF	55137.5	FROM GUARDRAIL TABULATION
02383	REMOVE & RESET GUARDRAIL	LF	0.0	FROM GUARDRAIL TABULATION
02387	GUARDRAIL CONNECTOR TO BRIDGE END TY A-1	EACH	4	FROM GUARDRAIL TABULATION
02391	GUARDRAIL END TREATMENT TYPE 4A	EACH	54	FROM GUARDRAIL TABULATION
02483	CHANNEL LINING CL II	TON	695	
02562	TEMPORARY SIGNS	SQFT	1512	FROM MOT TABULATION
02565	OBJECT MARKER TYPE 2	EACH	16	
02596	FABRIC-GEOTEXTILE TYPE I	SQYD	1390	
02599	FABRIC-GEOTEXTILE TYPE IV	SQYD	200	
02650	MAINTAIN & CONTROL TRAFFIC	LS	1	FROM MOT TABULATION
02671	PORTABLE CHANGEABLE MESSAGE SIGN	EACH	4	FROM MOT TABULATION
02677	ASPHALT PAVE MILLING & TEXTURING	TON	1411	FROM MOT TABULATION
02696	SHOULDER RUMBLE STRIPS	LF	400	
02701	TEMP SILT FENCE	LF	7920	FROM EROS CTRL TABULATION
02703	SILT TRAP TYPE A	EACH	14	FROM EROS CTRL TABULATION
02704	SILT TRAP TYPE B	EACH	14	FROM EROS CTRL TABULATION
02705	SILT TRAP TYPE C	EACH	14	FROM EROS CTRL TABULATION
02705	SILT TRAP TYPE C - MEDIAN	EACH	74	
02706	CLEAN SILT TRAP TYPE A	EACH	14	FROM EROS CTRL TABULATION
02707	CLEAN SILT TRAP TYPE B	EACH	14	FROM EROS CTRL TABULATION
02708	CLEAN SILT TRAP TYPE C	EACH	14	FROM EROS CTRL TABULATION
02708	CLEAN SILT TRAP TYPE C - MEDIAN	EACH	74	
02775	ARROW PANEL	EACH	3	FROM MOT TABULATION
02898	RELOCATE CRASH CUSHION	EACH	8	FROM GUARDRAIL & MOT TABULATION
02929	CRASH CUSHION TYPE IX	EACH	4	FROM GUARDRAIL TABULATION
03171	CONCRETE BARRIER WALL TYPE 9T	LF	8880	FROM MOT TABULATION
03262	CLEAN PIPE STRUCTURE	EACH	12	
04714	POLE 120 FT MTG HT HIGH MAST	EACH	4	FROM LIGHTING SUMMARY
04820	TRENCHING AND BACKFILLING	LF	7850	FROM LIGHTING SUMMARY
04862	CABLE-NO. 4/3C DUCTED	LF	8150	FROM LIGHTING SUMMARY

**I-165 CONVERSION
KYTC - DISTRICT 2
MP 37.2 TO MP 72.3
ITEM NO. 2-2092**

OHIO COUNTY CORRIDOR GENERAL TABULATION

05950	EROSION CONTROL BLANKET	SQYD	63888	FROM EROS CTRL TABULATION
05952	TEMP MULCH	SQYD	42592	FROM EROS CTRL TABULATION
05953	TEMP SEEDING AND PROTECTION	SQYD	31944	FROM EROS CTRL TABULATION
05963	INITIAL FERTILIZER	TON	6.6	FROM EROS CTRL TABULATION
05964	20-10-10 FERTILIZER	TON	3.5	FROM EROS CTRL TABULATION
05992	AGRICULTURAL LIMESTONE	TON	40	FROM EROS CTRL TABULATION
06511	PAVE STRIPING-TEMP PAINT-6 IN	LF	84290	FROM MOT TABULATION
06513	PAVE STRIPING-TEMP PAINT-12 IN	LF	1200	FROM MOT TABULATION
06515	PAVE STRIPING-PERM PAINT-6 IN	LF	279200	
08500	APPROACH SLAB - BRIDGE MP 51.2	SY	333.33	
08903	CRASH CUSHION TY VI CLASS BT TL3	EACH	4	FROM MOT TABULATION
10020NS	FUEL ADJUSTMENT	DOLL		
10030NS	ASPHALT ADJUSTMENT	DOLL		
20410ED	MAINTAIN LIGHTING	LS	1	FROM LIGHTING SUMMARY
20411ED	LAW ENFORCEMENT OFFICER	HOUR	1200	FROM MOT TABULATION
21543EN	BORE AND JACK CONDUIT	LF	300	FROM LIGHTING SUMMARY
21802EN	G/R STEEL W BEAM-S FACE (7 FT POST)	LF	55137.5	FROM GUARDRAIL TABULATION
22664EN	WATER BLASTING EXISTING STRIPE	LF	62130	FROM MOT TABULATION
22883EN	CONCRETE WEDGE CURB	LF	16750	
23161EN	POLE BASE-HIGH MAST	CUYD	35	FROM LIGHTING SUMMARY
23791EC	PAVE STRIPING-CHEVRON MARKINGS	SQFT	8850	
24096EC	REMOVE AND RESET END TREATMENT	EACH	0	FROM GUARDRAIL TABULATION
24662EC	CLEAN AND INSPECT DBI'S	EACH	74	
24749EC	HIGH MAST LED LUMINAIRE	EACH	98	FROM LIGHTING SUMMARY

I-165 CONVERSION
KYTC - DISTRICT 2
MP 61.55 TO MP 72.3
ITEM NO. 2-2092**DAVISS COUNTY CORRIDOR GENERAL TABULATION**

ITEM CODE	ITEM	UNIT	TOTAL PROJECT	NOTES
00212	CL2 ASPH BASE 1.00D PG64-22	TON	879	FROM MOT TABULATION
01511	DROP BOX INLET TYPE 5D	EACH	3	
01690	FLUME INLET TYPE 1	EACH	3	FROM WEDGE CURB TABULATION
01691	FLUME INLET TYPE 2	EACH	14	FROM WEDGE CURB TABULATION
01890	ISLAND HEADER CURB TYPE 1	LF	450	
01982	DELINEATOR FOR GUARDRAIL M/W	EACH	1072	FROM GUARDRAIL TABULATION
01983	DELINEATOR FOR GUARDRAIL M/Y	EACH	139	FROM GUARDRAIL TABULATION
01984	DELINEATOR FOR BARRIER - WHITE	EACH	63	FROM MOT TABULATION
01985	DELINEATOR FOR BARRIER - YELLOW	EACH	63	FROM MOT TABULATION
02003	RELOCATE TEMP CONC BARRIER	LF	4440	FROM MOT TABULATION
02014	BARRICADE-TYPE III	EACH	8	FROM MOT TABULATION
02091	REMOVE PAVEMENT	SQYD	3200	
02159	TEMP DITCH	LF	7920	FROM EROS CTRL TABULATION
02160	CLEAN TEMP DITCH	LF	3960	FROM EROS CTRL TABULATION
02165	REMOVE PAVED DITCH	LF	1000	
02200	ROADWAY EXCAVATION	CUYD	1000	
02223	GRANULAR EMBANKMENT	CUYD	50	
02237	DITCHING - SHOULDERS	LF	112953	
02237	DITCHING - MEDIAN	LF	56477	
02242	WATER	MGAL	1000	
02363	GUARDRAIL CONNECTOR TO BRIDGE END TY A	EACH	24	FROM GUARDRAIL TABULATION
02365	CRASH CUSHION TYPE IX-A	EACH	12	FROM GUARDRAIL TABULATION
02367	GUARDRAIL END TREATMENT TYPE 1	EACH	10	FROM GUARDRAIL TABULATION
02369	GUARDRAIL END TREATMENT TYPE 2A	EACH	49	FROM GUARDRAIL TABULATION
02381	REMOVE GUARDRAIL	LF	58850	FROM GUARDRAIL TABULATION
02383	REMOVE & RESET GUARDRAIL	LF	0	FROM GUARDRAIL TABULATION
02387	GUARDRAIL CONNECTOR TO BRIDGE END TY A-1	EACH	12	FROM GUARDRAIL TABULATION
02391	GUARDRAIL END TREATMENT TYPE 4A	EACH	39	FROM GUARDRAIL TABULATION
02483	CHANNEL LINING CLASS II	TON	695	
02562	TEMPORARY SIGNS	SQFT	1512	FROM MOT TABULATION
02565	OBJECT MARKER TYPE 2	EACH	24	
02596	FABRIC-GEOTEXTILE TYPE I	SQYD	1390	
02599	FABRIC-GEOTEXTILE TYPE IV	SQYD	100	
02671	PORTABLE CHANGEABLE MESSAGE SIGN	EACH	4	FROM MOT TABULATION
02677	ASPHALT PAVE MILLING & TEXTURING	TON	879	FROM MOT TABULATION
02696	SHOULDER RUMBLE STRIPS	LF	1200	
02701	TEMP SILT FENCE	LF	8570	FROM EROS CTRL TABULATION
02703	SILT TRAP TYPE A	EACH	13	FROM EROS CTRL TABULATION
02704	SILT TRAP TYPE B	EACH	13	FROM EROS CTRL TABULATION
02705	SILT TRAP TYPE C	EACH	13	FROM EROS CTRL TABULATION
02705	SILT TRAP TYPE C - MEDIAN	EACH	68	
02706	CLEAN SILT TRAP TYPE A	EACH	13	FROM EROS CTRL TABULATION
02707	CLEAN SILT TRAP TYPE B	EACH	13	FROM EROS CTRL TABULATION
02708	CLEAN SILT TRAP TYPE C	EACH	13	FROM EROS CTRL TABULATION
02708	CLEAN SILT TRAP TYPE C - MEDIAN	EACH	68	
02775	ARROW PANEL	EACH	3	FROM MOT TABULATION
02898	RELOCATE CRASH CUSHION	EACH	6	FROM GUARDRAIL & MOT TABULATION
02929	CRASH CUSHION TYPE IX	EACH	12	FROM GUARDRAIL TABULATION
03171	CONCRETE BARRIER WALL TYPE 9T	LF	4440	FROM MOT TABULATION
03262	CLEAN PIPE STRUCTURE	EACH	11	
04700	POLE 30 FT MTG HT	EACH	1	FROM LIGHTING SUMMARY
04721	BRACKET 6 FT	EACH	1	FROM LIGHTING SUMMARY
04740	POLE BASE	EACH	1	FROM LIGHTING SUMMARY
04750	TRANSFORMER BASE	EACH	1	FROM LIGHTING SUMMARY

I-165 CONVERSION
KYTC - DISTRICT 2
MP 61.55 TO MP 72.3
ITEM NO. 2-2092**DAVISS COUNTY CORRIDOR GENERAL TABULATION**

04793	CONDUIT-1 1/4 IN	LF	12310	FROM LIGHTING SUMMARY
04820	TRENCHING AND BACKFILLING	LF	12310	FROM LIGHTING SUMMARY
04834	WIRE-NO. 6	LF	38580	FROM LIGHTING SUMMARY
05950	EROSION CONTROL BLANKET	SQYD	59664	FROM EROS CTRL TABULATION
05952	TEMP MULCH	SQYD	39776	FROM EROS CTRL TABULATION
05953	TEMP SEEDING AND PROTECTION	SQYD	29832	FROM EROS CTRL TABULATION
05963	INITIAL FERTILIZER	TON	6.2	FROM EROS CTRL TABULATION
05964	20-10-10 FERTILIZER	TON	3.2	FROM EROS CTRL TABULATION
05992	AGRICULTURAL LIMESTONE	TON	37	FROM EROS CTRL TABULATION
06511	PAVE STRIPING-TEMP PAINT-6 IN	LF	69670	FROM MOT TABULATION
06515	PAVE STRIPING-PERM PAINT-6 IN	LF	257000	
06517	PAVE STRIPING-PERM PAINT-12 IN	LF	2015	
08500	APPROACH SLAB - BRIDGE MP 64.5	SY	333.33	
08500	APPROACH SLAB - BRIDGE MP 64.8	SY	333.33	
08500	APPROACH SLAB - BRIDGE MP 65.0	SY	333.33	
08903	CRASH CUSHION TY VI CLASS BT TL3	EACH	7	FROM MOT TABULATION
10020NS	FUEL ADJUSTMENT	DOLL		
10030NS	ASPHALT ADJUSTMENT	DOLL		
20391NS835	ELECTRICAL JUNCTION BOX TYPE A	EACH	8	FROM LIGHTING SUMMARY
20410ED	MAINTAIN LIGHTING	LS	1	FROM LIGHTING SUMMARY
20411ED	LAW ENFORCEMENT OFFICER	HOUR	1000	FROM MOT TABULATION
21543EN	BORE AND JACK CONDUIT	LF	310	FROM LIGHTING SUMMARY
21802EN	G/R STEEL W BEAM-S FACE (7 FT POST)	LF	58850.0	FROM GUARDRAIL TABULATION
22664EN	WATER BLASTING EXISTING STRIPE	LF	49240	FROM MOT TABULATION
22883EN	CONCRETE WEDGE CURB	LF	6225	FROM WEDGE CURB TABULATION
24096EC	REMOVE AND RESET END TREATMENT	EACH	0	FROM GUARDRAIL TABULATION
24589ED	LED LUMINAIRE	EACH	74	FROM LIGHTING SUMMARY
24662EC	CLEAN AND INSPECT DBI'S	EACH	68	
24749EC	HIGH MAST LED LUMINAIRE	EACH	0	FROM LIGHTING SUMMARY
24984EC	TRANSVERSE IN-LANE RUMBLE STRIPS	EACH	6	

INTERSTATE 65 SPUR
KYTC - DISTRICT 2
OHIO AND DAVISSL COUNTIES
MP 37.2 TO MP 72.3
ITEM NO. 2-2092

PAVING SUMMARY

PAVING AREAS										
ITEM	UNIT	OHIO COUNTY				DAVISS COUNTY				DISTRICT 2
		OHIO CORRIDOR	PVMT REPL. MP 49.3	THIN MILL / INLAY	OHIO SUBTOTAL	DAVISS CORRIDOR	THIN MILL / INLAY	DAVISS SUBTOTAL	TOTAL AREA (SY)	
1.50" CL3 ASPH SURF 0.50A PG76-22	SQYD	1067	32180	439296	472543	3867	405504	409371	881914	
1.50" CL2 ASPH SURF 0.50D PG64-22	SQYD	712			712	2579		2579	3291	
3.00" CL3 ASPH BASE 1.00D PG76-22	SQYD	1067			1067	3200		3200	4267	
3.00" CL2 ASPH BASE 1.00D PG64-22	SQYD	712			712	2134		2134	2846	
3.25" CL3 ASPH BASE 1.00D PG64-22	SQYD	2134			2134	6400		6400	8534	
3.25" CL2 ASPH BASE 1.00D PG64-22	SQYD	1424			1424	4268		4268	5692	
3.50" CL3 ASPH BASE 1.00D PG76-22	SQYD		32470		32470			0	32470	
3.50" CL3 ASPH BASE 1.00D PG64-22	SQYD		66170		66170			0	66170	
4.00" CRUSHED STONE BASE	SQYD		33774		33774			0	33774	
6.00" CRUSHED STONE BASE	SQYD	1779			1779	5334		5334	7113	
ASPHALT SEAL COAT	SQYD	150			150	600		600	750	
ASPHALT SEAL AGGREGATE	SQYD	150			150	600		600	750	
ASPHALT PAVE MILLING & TEXT	SQYD				0	1112		1112	1112	
ASPHALT MATERIAL FOR TACK	SQYD	5337	98640	439296	543273	16002	405504	421506	964779	

PAVING SUMMARY											
CODE	ITEM	UNIT	OHIO COUNTY				DAVISS COUNTY				DISTRICT 2
			OHIO CORRIDOR	PVMT REPL. MP 49.3	THIN MILL / INLAY	OHIO SUBTOTAL	DAVISS CORRIDOR	THIN MILL / INLAY	DAVISS SUBTOTAL	TOTAL QUANTITY	
3	CRUSHED STONE BASE	TON	345	20602		20947	1035		1035	21982	
78	CRUSHED AGGREGATE NO. 2	TON	502	15792		16294	1506		1506	17800	
100	ASPHALT SEAL AGGREGATE	TON		111		111			0	111	
103	ASPHALT SEAL COAT	TON		13		13			0	13	
212	CL2 ASPH BASE 1.00D PG64-22	TON				0			7	7	
214	CL3 ASPH BASE 1.00D PG64-22	TON	605	12738	5462	18805	1815	4934	6749	25554	
216	CL3 ASPH BASE 1.00D PG76-22	TON	257	6250		6507	771	28	799	7306	
309	CL2 ASPH SURF 0.50D PG64-22	TON	59			59	37	3	40	99	
332	CL3 ASPH SURF 0.50A PG76-22	TON	110	2655	35894	38659	385	33133	33518	72177	
356	ASPHALT MATERIAL FOR TACK	TON	2.2	4.1	185	191.3	6.7		6.7	198	
2677	ASPHALT PAVE MILLING & TEXTURING	TON				0	123		123	123	
22861EN	HIGH STRENGTH FABRIC TTY	SQYD	10648	41558		52206	31944		31944	84150	
1000	PERFORATED PIPE-4 IN	LF	240			240	720		720	960	
1010	NON-PERFORATED PIPE-4 IN	LF	32			32	96		96	128	
1028	PERFORATED PIPE HDWLL TY 3-4 IN	EACH	8			8	24		24	32	

COUNTY OF	ITEM NO.
VARIOUS	2-2092.08

ROADWAY LIGHTING ESTIMATE OF QUANTITIES

DISTRICT 2

ITEM DESCRIPTION	CODE	UNITS	DAVIESS COUNTY		TOTALS
			EXIT 43	EXIT 72	
POLE 30' MTG HT	4700	EACH	-	1	1
POLE 120' MTG HT HIGH MAST	4714	EACH	4	-	4
BRACKET 6'	4721	EACH	-	1	1
POLE BASE	4740	EACH	-	1	1
TRANSFORMER BASE	4750	EACH	-	1	1
FUSED CONNECTOR KIT	4780	EACH	-	156	156
CONDUIT - 1 1/4 INCH	4793	LF	-	12,310	12,310
MARKER	4800	EACH	28	-	28
TRENCHING AND BACKFILLING	4820	LF	7,850	-	7,850
WIRE - NO. 6	4834	LF	-	38,580	38,580
CABLE - NO. 4/3C DUCTED	4862	LF	8,150	-	8,150
ELECTRICAL JUNCTION BOX TYPE A	2039INS835	EACH	-	8	8
MAINTAIN LIGHTING	20410E	LS	1	1	2
BORE AND JACK CONDUIT	21543EN	LF	300	310	610
POLE BASE - HIGH MAST	23161EN	CUYD	35	-	35
LED LUMINAIRE	24589ED	EACH	-	74	74
HIGH MAST LED LUMINAIRE	24749EC	EACH	98	-	98

GENERAL NOTES

THE STANDARD SPECIFICATIONS FOR ROAD AND BRIDGE CONSTRUCTION, CURRENT EDITION, AND OTHER SPECIAL NOTES AND SPECIFICATIONS WILL APPLY ON THIS PROJECT. SEE SECTION 716 FOR MEASUREMENT AND OTHER DETAILS. SEE SECTION 602 FOR SPIRAL REINFORCEMENT SPlicing.

THE CONTRACTOR SHALL MAKE AN INSPECTION OF THE PROJECT SITE PRIOR TO SUBMITTING A BID AND SHALL BE THOROUGHLY FAMILIARIZED WITH EXISTING CONDITIONS. SUBMISSIONS OF A BID WILL BE CONSIDERED AN AFFIRMATION OF THIS INSPECTION HAVING BEEN COMPLETED.

FOR MAINTAIN LIGHTING, THE CONTRACTOR SHALL MAINTAIN THE EXISTING ILLUMINANCE LEVELS ON THE ROADWAYS, RAMPS, ETC. THROUGHOUT THE CONSTRUCTION PROCESS. CONTRACTOR SHALL PREPARE AND PROVIDE A LIGHTING PLAN SHOWING HOW THEY WILL ACHIEVE THIS. THIS CAN BE A COMBINATION OF MAINTAINING THE EXISTING LIGHTING, PROVIDING TEMPORARY LIGHTING, AND/OR INSTALLATION OF THE NEW LIGHTING SYSTEM. THE PROPOSED LIGHTING LAYOUT DESIGN SHALL BE SUBMITTED FOR APPROVAL TO THE DIVISION OF TRAFFIC, FRANKFORT, KY 1502-564-3020 PRIOR TO THE BEGINNING OF ROAD OR BRIDGE CONSTRUCTION.

ALL UNDERGROUND CONDUIT SHALL BE 2" RIGID STEEL UNLESS OTHERWISE SPECIFIED. JUNCTION BOXES, CONDUITS AND ROAD CROSSING LOCATIONS ARE SCHEMATIC ONLY. EXACT LOCATIONS SHALL BE APPROVED BY THE ENGINEER AND DEDUCTED ON THE AS-BUILT PLANS. ALL CONDUITS SHALL BE ACCESSIBLE INSIDE JUNCTION BOXES. ANY DUCTED CABLE SHALL RUN THROUGH 3" RS CONDUIT UNDER THE ROADWAY WITH ONLY ONE DUCTED CABLE PER CONDUIT PERMITTED. ALL SPARE CONDUITS SHALL BE CAPPED ON BOTH ENDS AS SHOWN ON JUNCTION BOX DETAIL. THERE SHALL BE NO OPEN CUTTING OF ROADWAY UNLESS APPROVED BY ENGINEER.

JUNCTION BOXES SHALL BE PLACED IN LOCATIONS TO AVOID STANDING WATER AND DITCH LINES. ANY ADDITIONAL JUNCTION BOXES SHALL BE APPROVED BY THE ENGINEER.

ALL CABLE/WIRE RUNS SHALL BE SPLICE-FREE FROM THE CONTROLLER TO EACH POLE THE CABLE/WIRE IS FEEDING. ALL CABLES SHALL BE PERMANENTLY LABELED INSIDE POLE BASES, CABINETS AND JUNCTION BOXES WITH CIRCUIT NUMBERS.

REGARDLESS OF THE NORTHING & EASTING NOTED, ALL POLES LOCATED BEHIND GUARDRAIL MUST BE A MINIMUM OF 5 FEET BEHIND THE FACE OF THE GUARDRAIL.

ALL EXPOSED CONDUIT MUST BE SECURED IN PLACE ACCORDING TO THE NATIONAL ELECTRIC CODE WITH CONDUIT STRAPS/OR METHODS AS APPROVED BY THE ENGINEER.

ALL SPLICES NOTED ON THIS PLAN SHALL BE APPROVED BY CENTRAL OFFICE TRAFFIC OPERATIONS. THESE SPLICES SHALL BE WATERPROOF AND SHALL BE OF THE CORRECT SIZE FOR THE WIRE USED AND SHALL BE RAYCHEM GTAP-2(B18), OR APPROVED EQUAL. ALL SPLICES SHALL BE INCIDENTAL TO THE WIRE AND CABLE BEING INSTALLED.

UPON COMPLETION OF THE PROJECT AND AN INSPECTION WILL BE CARRIED OUT AFTER THE LIGHTING IS FUNCTIONAL TO VERIFY PROPER ILLUMINATION, OTHER OPERATIONAL FEATURES, AND AN INSULATION TEST OF ALL WIRING AS WELL AS GROUNDING RESISTANCE. ALL ROADWAY LIGHTING CIRCUITS MUST PASS AN INSULATION TEST OF 100 MILLION OHMS TO GROUND. GROUND RODS SHALL HAVE A RESISTANCE TO GROUND NOT TO EXCEED 25 OHMS. IF GROUND RESISTANCE EXCEEDS 25 OHMS, THERE SHALL BE TWO OR MORE GROUND RODS CONNECTED IN PARALLEL UNTIL IT MEETS THIS VALUE.

ITEM	2-209000
COUNTY OF	OHIO

DESIGN CRITERIA FOR LED LIGHTING @ EXIT 43
 OVERALL ILLUMINANCE (Fc)
 AVERAGE: 0.78
 MAXIMUM: 3.4
 MINIMUM: 0.1
 AVG./MIN: 7.80

NOTE:
 ALL LED LUMINAIRES SHALL BE NO MORE THAN 627 WATTS AND IES TYPE III.

EXISTING LIGHTING CONTROL CENTER AND POWER SOURCE, 480 VOLT, 1 PHASE ELECTRIC SERVICE.

ITEM CODE	ITEM	UNIT	SHEET TOTALS
4714	POLE 120' MTG HT. HIGH MAST	EACH	4
4800	MARKER	EACH	28
4820	TRENCHING AND BACKFILLING	LF	7,850
4862	CABLE - NO. 4/3C DUCTED	LF	8,150
2040ED	MAINTAIN LIGHTING	LS	1
21543EN	BORE AND JACK CONDUIT	LF	300
23161EN	POLE BASE - HIGH MAST	CUYD	35
24749EC	HIGH MAST LED LUMINAIRE	EACH	98

POLE	COORDINATES	ALIGNMENT
HM 15	N 3666575.219 E 3655317.629	W. KY PKWY
HM 17	N 3654041.763 E 3611423.922	W. KY PKWY

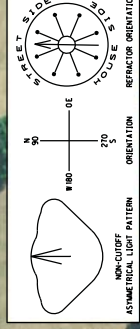
CABLE	ORIGIN	ENDING	CONNECTING
#4/3C	DUCTED SERVICE 1	HM1	CKT #1
#8/3C	DUCTED SERVICE 1	HM2	CKT #2
#8/3C	DUCTED SERVICE 1	HM3	CKT #3
#8/3C	DUCTED SERVICE 1	HM4	CKT #4
#6/3C	DUCTED SERVICE 1	HM5	CKT #5
#6/3C	DUCTED SERVICE 1	HM6	CKT #6
#4/3C	DUCTED SERVICE 1	HM7	CKT #7
#4/3C	DUCTED SERVICE 1	HM8	CKT #8
#6/3C	DUCTED SERVICE 2	HM9	CKT #9
#6/3C	DUCTED SERVICE 2	HM10	CKT #10
#6/3C	DUCTED SERVICE 2	HM11	CKT #11
#4/3C	DUCTED SERVICE 2	HM12	CKT #12
#8/3C	DUCTED SERVICE 2	HM13	CKT #13
#6/3C	DUCTED SERVICE 2	HM14	CKT #14
#4/3C	DUCTED SERVICE 2	HM15	CKT #15
#4/3C	DUCTED SERVICE 2	HM16	CKT #16
#4/3C	DUCTED SERVICE 1	HM17	CKT #17
#4/3C	DUCTED SERVICE 1	HM18	CKT #18

POLE	HTG.	LAMP WATTS	BASE DEPTH	CT NO.	LIGHT PATTERN	HOUSE SIDE SHIELD	REFRACTOR ORIENTATION
HM1	120 FT	627W (6)	N/A - EX. POLE	1	ASYMMETRICAL	120°	235.8°
HM2	120 FT	627W (6)	N/A - EX. POLE	2	ASYMMETRICAL	120°	2.9°
HM3	120 FT	627W (6)	N/A - EX. POLE	3	ASYMMETRICAL	NONE	13.8°
HM4	120 FT	627W (6)	N/A - EX. POLE	4	ASYMMETRICAL	120°	162.7°
HM5	120 FT	627W (6)	N/A - EX. POLE	5	ASYMMETRICAL	120°	333.2°
HM6	120 FT	627W (6)	N/A - EX. POLE	6	ASYMMETRICAL	120°	82.7°
HM7	120 FT	627W (6)	N/A - EX. POLE	7	ASYMMETRICAL	NONE	72.5°
HM8	120 FT	627W (6)	N/A - EX. POLE	8	ASYMMETRICAL	120°	57.2°
HM9	120 FT	627W (6)	N/A - EX. POLE	9	ASYMMETRICAL	120°	212.6°
HM10	120 FT	627W (6)	N/A - EX. POLE	10	ASYMMETRICAL	120°	6.2°
HM11	120 FT	627W (6)	N/A - EX. POLE	11	ASYMMETRICAL	NONE	295.7°
HM12	120 FT	627W (6)	N/A - EX. POLE	12	ASYMMETRICAL	120°	254.0°
HM13	120 FT	627W (6)	N/A - EX. POLE	13	ASYMMETRICAL	120°	179.7°
HM14	120 FT	627W (6)	N/A - EX. POLE	14	ASYMMETRICAL	120°	120.2°
HM15	120 FT	627W (4)	SEE HM BASE DET.	15	ASYMMETRICAL	120°	123.5°
HM16	120 FT	627W (4)	SEE HM BASE DET.	16	ASYMMETRICAL	120°	204.5°
HM17	120 FT	627W (4)	SEE HM BASE DET.	17	ASYMMETRICAL	120°	301.5°
HM18	120 FT	627W (4)	SEE HM BASE DET.	18	ASYMMETRICAL	120°	208.2°

LEGEND

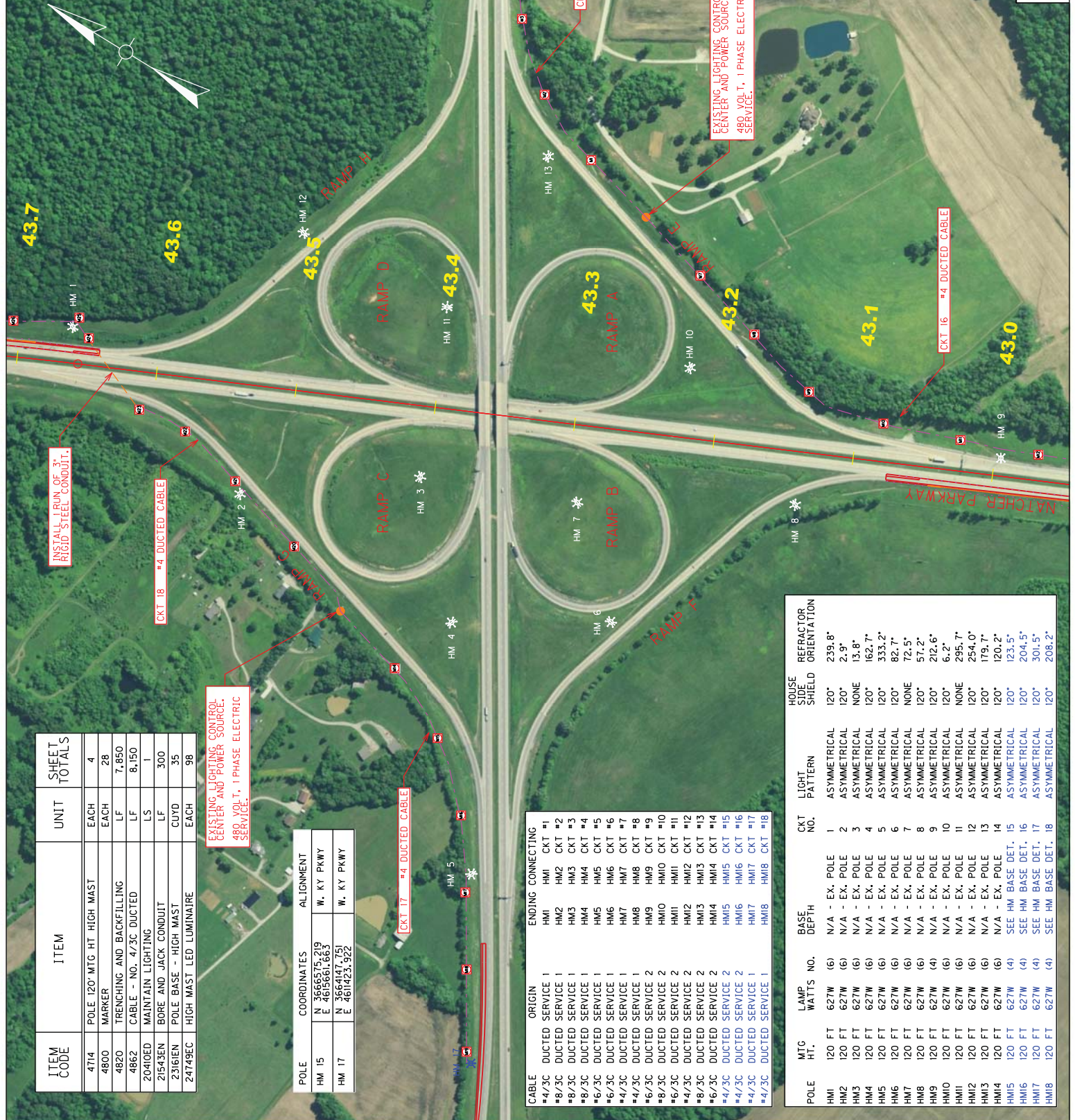
- CONCRETE MARKER
- PROPOSED HIGH MAST BULLB REPLACEMENT
- PROPOSED HIGH MAST POLE
- DUCTED CABLE
- 3" RIGID STEEL CONDUIT

NOTE:
 HIGH MAST POLES SHALL BE PLACED AS SHOWN ON PLANS AND BE SET AS STATED ON PLANS TO PROVIDE PROPER ILLUMINATION. IF ANY POLE NEEDS TO BE LOCATED MORE THAN 20' FROM THE STATION INDICATED, C.O. TRAFFIC SHALL BE CONTACTED AT 502-564-3020.



EXIT 43

BULB REPLACEMENT LAYOUT SHEET



COUNTY OF	OHIO
ITEM	2-2050



43.6

43.7

43.8

43.9

CKT 18 #4 DUCTED CABLE

HM 1

HM 18

NATCHER PARKWAY

INSTALL 1 RUN OF 3" RIGID STEEL CONDUIT.

LEGEND



CONCRETE MARKER



PROPOSED HIGH MAST BULB REPLACEMENT



PROPOSED HIGH MAST POLE



DUCTED CABLE



3" RIGID STEEL CONDUIT

POLE	COORDINATES	ALIGNMENT
HM 18	N 3667529.864 E 4612642.297	NATCHER PKWY

5544.0 175 2100'

EXIT 43 - NB RAMP

PROPOSED POLE LOCATIONS

COUNTY OF	OHIO
ITEM	2-209

42.8

42.9

43.0

43.1



CKT 16 #4 DUCTED CABLE

NATCHER PARKWAY

M9

M10

M11

M12

M13

HM 9

HM 16

HM 8

LEGEND



CONCRETE MARKER



PROPOSED HIGH MAST BULB REPLACEMENT



PROPOSED HIGH MAST POLE



DUCTED CABLE

SCALE: 1" = 300'

EXIT 43 - SB RAMP

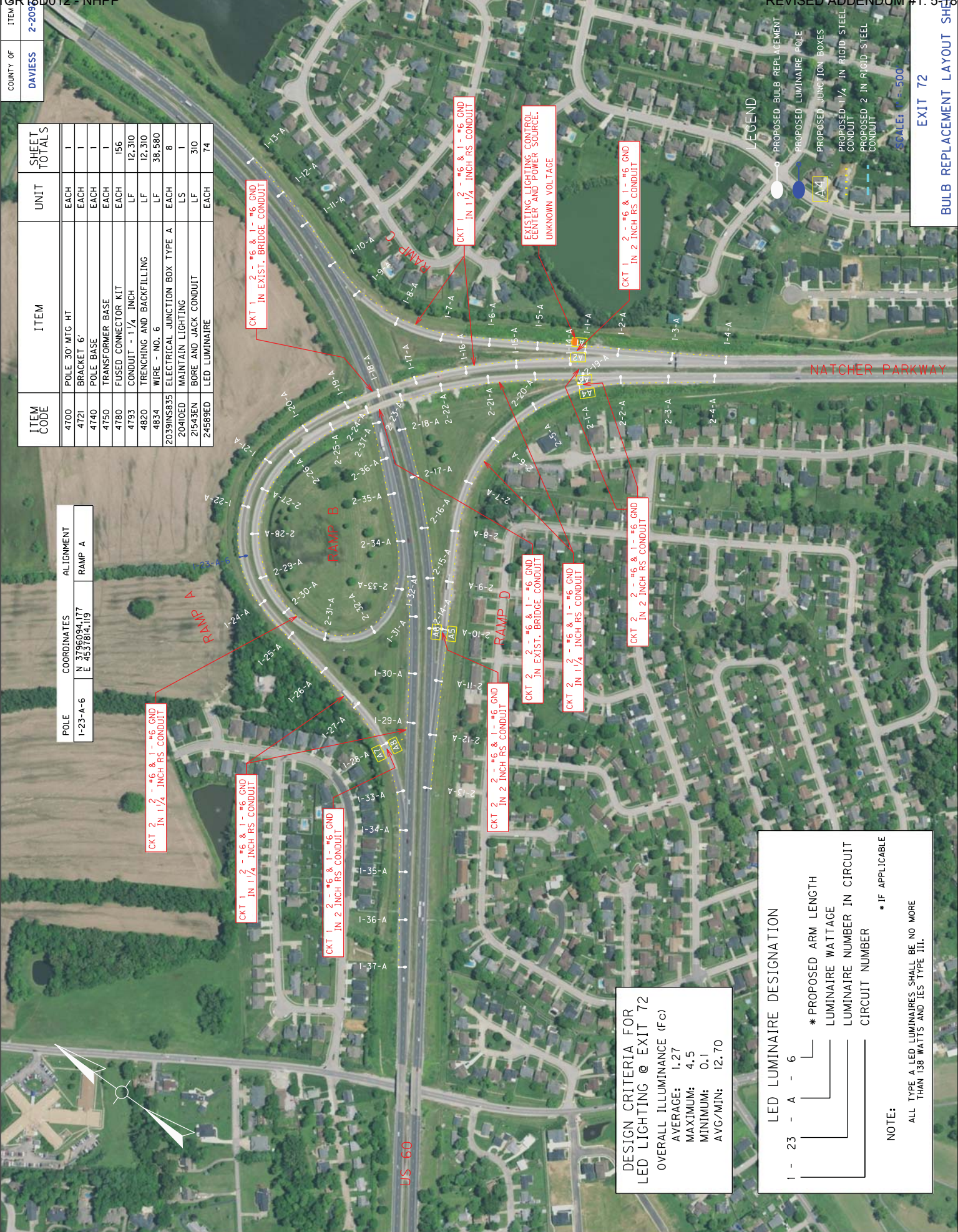
PROPOSED POLE LOCATIONS

POLE	COORDINATES	ALIGNMENT
HM 16	N 3663138.580 E 4614623.547	NATCHER PKWY

ITEM NO.	2-2098000
COUNTY OF	DAVISS

ITEM CODE	ITEM	UNIT	SHEET TOTALS
4700	POLE 30' MTC HT	EACH	1
4721	BRACKET 6'	EACH	1
4740	POLE BASE	EACH	1
4750	TRANSFORMER BASE	EACH	1
4760	FUSED CONNECTOR KIT	EACH	156
4793	CONDUIT - 1 1/4 INCH	LF	12,310
4820	TRENCHING AND BACKFILLING	LF	12,310
4834	WIRE - NO. 6	LF	38,580
2039INS835	ELECTRICAL JUNCTION BOX TYPE A	EACH	8
2040IED	MAINTAIN LIGHTING	LS	1
21543EN	BORE AND JACK CONDUIT	LF	310
24589ED	LED LUMINAIRE	EACH	74

POLE	COORDINATES	ALIGNMENT
I-23-A-6	N 3796084.177 E 4537814.119	RAMP A



LEGEND

- PROPOSED BULB REPLACEMENT
- PROPOSED LUMINAIRE POLE
- PROPOSED JUNCTION BOXES
- PROPOSED 1 1/4 IN RIGID STEEL CONDUIT
- PROPOSED 2 IN RIGID STEEL CONDUIT

SCALE: 1" = 500'

EXIT 72
BULB REPLACEMENT LAYOUT SHEET

CKT 2 2 - #6 & 1 - #6 GND
IN 1 1/4 INCH RS CONDUIT

CKT 1 2 - #6 & 1 - #6 GND
IN 1 1/4 INCH RS CONDUIT

CKT 1 2 - #6 & 1 - #6 GND
IN 2 INCH RS CONDUIT

CKT 2 2 - #6 & 1 - #6 GND
IN 2 INCH RS CONDUIT

CKT 2 2 - #6 & 1 - #6 GND
IN EXIST. BRIDGE CONDUIT

CKT 2 2 - #6 & 1 - #6 GND
IN 1 1/4 INCH RS CONDUIT

CKT 2 2 - #6 & 1 - #6 GND
IN 2 INCH RS CONDUIT

CKT 1 2 - #6 & 1 - #6 GND
IN 2 INCH RS CONDUIT

CKT 1 2 - #6 & 1 - #6 GND
IN 1 1/4 INCH RS CONDUIT

EXISTING LIGHTING CONTROL CENTER AND POWER SOURCE. UNKNOWN VOLTAGE

DESIGN CRITERIA FOR LED LIGHTING @ EXIT 72
OVERALL ILLUMINANCE (Fc)
AVERAGE: 1.27
MAXIMUM: 4.5
MINIMUM: 0.1
AVG./MIN: 12.70

LED LUMINAIRE DESIGNATION

I - 23 - A - 6

- * PROPOSED ARM LENGTH
- LUMINAIRE WATTAGE
- LUMINAIRE NUMBER IN CIRCUIT
- CIRCUIT NUMBER
- IF APPLICABLE

NOTE:
ALL TYPE A LED LUMINAIRES SHALL BE NO MORE THAN 158 WATTS AND IES TYPE III.

SPECIAL NOTE FOR PROJECT COMPLETION AND LIQUIDATED DAMAGES

NATCHER PARKWAY – I165 CONVERSION OHIO AND DAVIESS COUNTIES ITEM NO. 2-2092

The specified date of completion for this project will be June 30, 2019.

A specified intermediate date of completion of November 15, 2018, applies to the longitudinal edge drains, bridge stabilization transitions, vertical clearance corrections, driving lane patching, shoulder patching, Exit 50 mainline pavement replacement, and reflective cracking/blow-up/relief joint work, minus any application of final asphalt surface.

Completion of all other items in the contract and asphalt surface paving will be required by June 30, 2019. Liquidated damages, in the amount specified in Section 108.09 of the Standard Specifications, will be assessed for each day work is not complete after June 30, 2019 regardless of seasonal or weather limitations. Liquidated damages for failure to complete all items of work before June 30, 2019 will be charged concurrently and in addition to any other liquidated damage or penalty assessed on the project.

SPECIAL NOTE FOR DITCHING

Contrary to section 209.04.04 in the Standard Specifications, the Department will measure and pay for cleaning out pipe structures 36 inches or less in diameter. A quantity for clearing out pipe structures 36 inches or less in diameter has been included in the plans for bidding purposes only. Reshaping any deformed ends on metal end entrance pipes and disposing of unsuitable entrance pipes will still be considered incidental to Ditching.

MATERIAL SUMMARY

CONTRACT ID: 181212

121GR18D012 - NHPP

DE0301651812

I-65 IN DAVIESS COUNTY I-65 SPUR CORRIDOR; MODERNIZATION OF EXISITING NATCHER PARKWAY FROM THE OHIO COUNTY LINE TO THE US 60 INTERCHANGE IN OWENSBORO ASPHALT REHAB INTERSTATE/PARKWAY, A DISTANCE OF 10.71 MILES.

Project Line No	Bid Code	DESCRIPTION	Quantity	Unit
0705	00003	CRUSHED STONE BASE	1,035.00	TON
0710	00078	CRUSHED AGGREGATE SIZE NO 2	1,506.00	TON
0715	00212	CL2 ASPH BASE 1.00D PG64-22	1,110.00	TON
0720	00214	CL3 ASPH BASE 1.00D PG64-22 - (REVISED: 5-18-18)	6,749.00	TON
0725	00216	CL3 ASPH BASE 1.00D PG76-22	799.00	TON
0730	00309	CL2 ASPH SURF 0.50D PG64-22	229.00	TON
0735	00332	CL3 ASPH SURF 0.50A PG76-22	33,518.00	TON
0740	00356	ASPHALT MATERIAL FOR TACK - (REVISED: 5-18-18)	90.27	TON
0745	01000	PERFORATED PIPE-4 IN	720.00	LF
0750	01010	NON-PERFORATED PIPE-4 IN	96.00	LF
0755	01028	PERF PIPE HEADWALL TY 3-4 IN	24.00	EACH
0760	02677	ASPHALT PAVE MILLING & TEXTURING	123.00	TON
0765	20509ED	BLOW UP/RELIEF JOINT - (B)	184.86	SQYD
0770	20509ED	BLOW UP/RELIEF JOINT - (C)	284.40	SQYD
0775	22861EN	HIGH STRENGTH GEOTEXTILE FABRIC TY V	31,944.00	SQYD
0780	00078	CRUSHED AGGREGATE SIZE NO 2	995.00	TON
0785	00212	CL2 ASPH BASE 1.00D PG64-22 - (REVISED: 5-18-18)	879.00	TON
0790	01005	PERFORATED PIPE EDGE DRAIN-4 IN	225,907.00	LF
0795	01010	NON-PERFORATED PIPE-4 IN	18,897.00	LF
0800	01015	INSPECT & CERTIFY EDGE DRAIN SYSTEM - (DAVIESS COUNTY)	1.00	LS
0805	01020	PERF PIPE HEADWALL TY 1-4 IN	60.00	EACH
0810	01024	PERF PIPE HEADWALL TY 2-4 IN	60.00	EACH
0815	01028	PERF PIPE HEADWALL TY 3-4 IN - (REPLACED DAMAGED)	93.00	EACH
0820	01310	REMOVE PIPE - (EDGE DRAINS)	225,907.00	LF
0825	01502	DROP BOX INLET TYPE 5A	1.00	EACH
0830	01511	DROP BOX INLET TYPE 5D	3.00	EACH
0835	01690	FLUME INLET TYPE 1	3.00	EACH
0840	01691	FLUME INLET TYPE 2	14.00	EACH
0845	01890	ISLAND HEADER CURB TYPE 1	450.00	LF
0850	01982	DELINEATOR FOR GUARDRAIL MONO DIRECTIONAL WHITE	1,072.00	EACH
0855	01983	DELINEATOR FOR GUARDRAIL MONO DIRECTIONAL YELLOW	139.00	EACH
0860	01984	DELINEATOR FOR BARRIER - WHITE	63.00	EACH
0865	01985	DELINEATOR FOR BARRIER - YELLOW	63.00	EACH
0870	02003	RELOCATE TEMP CONC BARRIER	4,440.00	LF
0875	02014	BARRICADE-TYPE III	8.00	EACH
0880	02091	REMOVE PAVEMENT	3,200.00	SQYD
0885	02159	TEMP DITCH	7,920.00	LF
0890	02160	CLEAN TEMP DITCH	3,960.00	LF
0895	02165	REMOVE PAVED DITCH	1,000.00	SQYD
0900	02200	ROADWAY EXCAVATION	3,445.00	CUYD

MATERIAL SUMMARY

Project Line No	Bid Code	DESCRIPTION	Quantity	Unit
0905	02223	GRANULAR EMBANKMENT	50.00	CUYD
0910	02237	DITCHING	57,776.00	LF
0915	02242	WATER	1,000.00	MGAL
0920	02363	GUARDRAIL CONNECTOR TO BRIDGE END TY A	24.00	EACH
0925	02365	CRASH CUSHION TYPE IX-A	12.00	EACH
0930	02367	GUARDRAIL END TREATMENT TYPE 1	10.00	EACH
0935	02369	GUARDRAIL END TREATMENT TYPE 2A	49.00	EACH
0940	02381	REMOVE GUARDRAIL	58,850.00	LF
0945	02387	GUARDRAIL CONNECTOR TO BRIDGE END TY A-1	12.00	EACH
0950	02391	GUARDRAIL END TREATMENT TYPE 4A	39.00	EACH
0955	02483	CHANNEL LINING CLASS II	695.00	TON
0960	02545	CLEARING AND GRUBBING - (APPROXIMATELY 0.5 ACRES, DAVIESS COUNTY)	1.00	LS
0965	02562	TEMPORARY SIGNS	1,512.00	SQFT
0970	02565	OBJECT MARKER TYPE 2	24.00	EACH
0975	02596	FABRIC-GEOTEXTILE TYPE I	1,390.00	SQYD
0980	02599	FABRIC-GEOTEXTILE TYPE IV	100.00	SQYD
0985	02650	MAINTAIN & CONTROL TRAFFIC - (DAVIESS COUNTY)	1.00	LS
0990	02671	PORTABLE CHANGEABLE MESSAGE SIGN	4.00	EACH
0995	02676	MOBILIZATION FOR MILL & TEXT - (DAVIESS COUNTY)	1.00	LS
1000	02677	ASPHALT PAVE MILLING & TEXTURING	34,012.00	TON
1005	02696	SHOULDER RUMBLE STRIPS	227,107.00	LF
1010	02701	TEMP SILT FENCE	9,220.00	LF
1015	02703	SILT TRAP TYPE A	13.00	EACH
1020	02704	SILT TRAP TYPE B	15.00	EACH
1025	02705	SILT TRAP TYPE C	81.00	EACH
1030	02706	CLEAN SILT TRAP TYPE A	13.00	EACH
1035	02707	CLEAN SILT TRAP TYPE B	15.00	EACH
1040	02708	CLEAN SILT TRAP TYPE C	81.00	EACH
1045	02726	STAKING - (DAVIESS COUNTY)	1.00	LS
1050	02775	ARROW PANEL	3.00	EACH
1055	02898	RELOCATE CRASH CUSHION	6.00	EACH
1060	02929	CRASH CUSHION TYPE IX	12.00	EACH
1065	03171	CONCRETE BARRIER WALL TYPE 9T	4,440.00	LF
1070	03260	CLEAN ROADWAY DRAINS	9.00	EACH
1075	05950	EROSION CONTROL BLANKET	59,664.00	SQYD
1080	05952	TEMP MULCH	3,658.00	SQYD
1085	05952	TEMP MULCH	39,776.00	SQYD
1090	05953	TEMP SEEDING AND PROTECTION	30,198.00	SQYD
1095	05963	INITIAL FERTILIZER	6.24	TON
1100	05964	20-10-10 FERTILIZER	3.39	TON
1105	05985	SEEDING AND PROTECTION	4,195.00	SQYD
1110	05992	AGRICULTURAL LIMESTONE	3.93	TON
1115	06511	PAVE STRIPING-TEMP PAINT-6 IN	69,670.00	LF
1120	06515	PAVE STRIPING-PERM PAINT-6 IN	257,000.00	LF
1125	06517	PAVE STRIPING-PERM PAINT-12 IN	2,015.00	LF
1130	08500	APPROACH SLAB - (BRIDGE MP 64.5)	333.33	SQYD
1135	08500	APPROACH SLAB - (BRIDGE MP 64.8)	333.33	SQYD
1140	08500	APPROACH SLAB - (BRIDGE MP 65.0)	333.33	SQYD
1145	08903	CRASH CUSHION TY VI CLASS BT TL3	7.00	EACH

MATERIAL SUMMARY

Project Line No	Bid Code	DESCRIPTION	Quantity	Unit
1150	10020NS	FUEL ADJUSTMENT	56,778.00	DOLL
1155	10030NS	ASPHALT ADJUSTMENT	142,610.00	DOLL
1160	20071EC	JOINT ADHESIVE	227,251.00	LF
1165	20411ED	LAW ENFORCEMENT OFFICER	1,000.00	HOURL
1170	20758ED	REMOVE AND RESET PERF PIPE HEADWALL	725.00	EACH
1175	21597EN	REMOVE PERF PIPE HEADWALL - (DAMAGED)	180.00	EACH
1180	21802EN	G/R STEEL W BEAM-S FACE (7 FT POST)	58,850.00	LF
1185	22664EN	WATER BLASTING EXISTING STRIPE	49,240.00	LF
1190	22883EN	CONCRETE WEDGE CURB	6,225.00	LF
1195	23496EC	MEDIAN CROSSOVER REMOVAL - (MP 67.0)	1.00	EACH
1200	23496EC	MEDIAN CROSSOVER REMOVAL - (MP 68.2)	1.00	EACH
1205	23496EC	MEDIAN CROSSOVER REMOVAL - (MP 72.0)	1.00	EACH
1210	24489EC	INLAID PAVEMENT MARKER	1,421.00	EACH
1215	24662EC	CLEAN - (AND INSPECT DROP BOX INLETS)	68.00	EACH
1220	24906ED	REGRADE SLOPE	537.00	SQYD
1225	24979ED	REGRADE - (MEDIAN TURN-AROUND/CROSSOVER MP 61.6)	1.00	EACH
1230	24984EC	TRANSVERSE IN-LANE RUMBLE STRIPS	6.00	EACH
1235	02998	MASONRY COATING	182.00	SQYD
1240	08504	EPOXY SAND SLURRY	74.00	SQYD
1245	08549	BLAST CLEANING	74.00	SQYD
1250	23032EN	BRIDGE BARRIER RETROFIT	399.00	LF
1255	02998	MASONRY COATING	182.00	SQYD
1260	08504	EPOXY SAND SLURRY	74.00	SQYD
1265	08549	BLAST CLEANING	74.00	SQYD
1270	23032EN	BRIDGE BARRIER RETROFIT	399.00	LF
1275	02998	MASONRY COATING	156.00	SQYD
1280	08504	EPOXY SAND SLURRY	66.00	SQYD
1285	08549	BLAST CLEANING	66.00	SQYD
1290	23032EN	BRIDGE BARRIER RETROFIT	347.00	LF
1295	02998	MASONRY COATING	156.00	SQYD
1300	08504	EPOXY SAND SLURRY	66.00	SQYD
1305	08549	BLAST CLEANING	66.00	SQYD
1310	23032EN	BRIDGE BARRIER RETROFIT	347.00	LF
1315	02998	MASONRY COATING	156.00	SQYD
1320	08504	EPOXY SAND SLURRY	66.00	SQYD
1325	08549	BLAST CLEANING	66.00	SQYD
1330	23032EN	BRIDGE BARRIER RETROFIT	347.00	LF
1335	02998	MASONRY COATING	156.00	SQYD
1340	08504	EPOXY SAND SLURRY	66.00	SQYD
1345	08549	BLAST CLEANING	66.00	SQYD
1350	23032EN	BRIDGE BARRIER RETROFIT	347.00	LF
1355	04700	POLE 30 FT MTG HT	1.00	EACH
1360	04721	BRACKET 6 FT	1.00	EACH
1365	04740	POLE BASE	1.00	EACH
1370	04750	TRANSFORMER BASE	1.00	EACH
1375	04793	CONDUIT-1 1/4 IN	12,310.00	LF
1380	04820	TRENCHING AND BACKFILLING	12,310.00	LF
1385	04834	WIRE-NO. 6	38,580.00	LF
1390	20391NS835	ELECTRICAL JUNCTION BOX TYPE A	8.00	EACH

MATERIAL SUMMARY

Project Line No	Bid Code	DESCRIPTION	Quantity	Unit
1395	20410ED	MAINTAIN LIGHTING - (DAVISS COUNTY)	1.00	LS
1400	21543EN	BORE AND JACK CONDUIT	310.00	LF
1405	24589ED	LED LUMINAIRE	74.00	EACH
1410	02568	MOBILIZATION	1.00	LS
1415	02569	DEMOBILIZATION	1.00	LS
1420	03262	CLEAN PIPE STRUCTURE - (ADDED: 5-18-18)	11.00	EACH
1425	04780	FUSED CONNECTOR KIT - (ADDED: 5-18-18)	156.00	EACH

CONTRACT ID: 181212

121GR18D012 - NHPP

DE09201651812

I-165 IN OHIO COUNTY UPGRADE I-65 SPUR CORRIDOR; MODERNIZATION OF EXISTING NATCHER PARKWAY FROM THE OHIO-BUTLER COUNTY LINE TO DAVIESS COUNTY LINE ASPHALT REHAB INTERSTATE/PARKWAY, A DISTANCE OF 24.41 MILES.

Project Line No	Bid Code	DESCRIPTION	Quantity	Unit
0005	00003	CRUSHED STONE BASE	20,947.00	TON
0010	00078	CRUSHED AGGREGATE SIZE NO 2	16,294.00	TON
0015	00100	ASPHALT SEAL AGGREGATE	111.00	TON
0020	00103	ASPHALT SEAL COAT	13.00	TON
0025	00212	CL2 ASPH BASE 1.00D PG64-22	85.00	TON
0030	00214	CL3 ASPH BASE 1.00D PG64-22 - (REVISED: 5-18-18)	18,805.00	TON
0035	00216	CL3 ASPH BASE 1.00D PG76-22	6,507.00	TON
0040	00309	CL2 ASPH SURF 0.50D PG64-22	102.00	TON
0045	00332	CL3 ASPH SURF 0.50A PG76-22	38,659.00	TON
0050	00356	ASPHALT MATERIAL FOR TACK	191.46	TON
0055	01000	PERFORATED PIPE-4 IN	240.00	LF
0060	01010	NON-PERFORATED PIPE-4 IN	32.00	LF
0065	01028	PERF PIPE HEADWALL TY 3-4 IN	8.00	EACH
0070	20509ED	BLOW UP/RELIEF JOINT - (A)	355.50	SQYD
0075	22861EN	HIGH STRENGTH GEOTEXTILE FABRIC TY V	52,206.00	SQYD
0080	00078	CRUSHED AGGREGATE SIZE NO 2	1,079.00	TON
0085	00212	CL2 ASPH BASE 1.00D PG64-22 - (REVISED: 5-18-18)	1,411.00	TON
0090	01000	PERFORATED PIPE-4 IN	14,030.00	LF
0095	01005	PERFORATED PIPE EDGE DRAIN-4 IN	244,734.00	LF
0100	01010	NON-PERFORATED PIPE-4 IN	20,956.00	LF
0105	01015	INSPECT & CERTIFY EDGE DRAIN SYSTEM - (OHIO COUNTY)	1.00	LS
0110	01020	PERF PIPE HEADWALL TY 1-4 IN	66.00	EACH
0115	01024	PERF PIPE HEADWALL TY 2-4 IN	66.00	EACH
0120	01028	PERF PIPE HEADWALL TY 3-4 IN - (REPLACING DAMAGED)	93.00	EACH
0125	01310	REMOVE PIPE - (EDGE DRAIN)	244,734.00	LF
0130	01502	DROP BOX INLET TYPE 5A	1.00	EACH
0135	01511	DROP BOX INLET TYPE 5D	2.00	EACH
0140	01690	FLUME INLET TYPE 1	4.00	EACH
0145	01691	FLUME INLET TYPE 2	37.00	EACH
0150	01740	CORED HOLE DRAINAGE BOX CON-4 IN	3.00	EACH
0155	01890	ISLAND HEADER CURB TYPE 1	300.00	LF

MATERIAL SUMMARY

Project Line No	Bid Code	DESCRIPTION	Quantity	Unit
0160	01982	DELINEATOR FOR GUARDRAIL MONO DIRECTIONAL WHITE	1,150.00	EACH
0165	01983	DELINEATOR FOR GUARDRAIL MONO DIRECTIONAL YELLOW	25.00	EACH
0170	01984	DELINEATOR FOR BARRIER - WHITE	67.00	EACH
0175	01985	DELINEATOR FOR BARRIER - YELLOW	57.00	EACH
0180	02003	RELOCATE TEMP CONC BARRIER	5,100.00	LF
0185	02014	BARRICADE-TYPE III	14.00	EACH
0190	02091	REMOVE PAVEMENT	33,247.00	SQYD
0195	02159	TEMP DITCH	7,920.00	LF
0200	02160	CLEAN TEMP DITCH	3,960.00	LF
0205	02165	REMOVE PAVED DITCH	1,000.00	SQYD
0210	02200	ROADWAY EXCAVATION	4,725.00	CUYD
0215	02223	GRANULAR EMBANKMENT	100.00	CUYD
0220	02237	DITCHING	61,183.00	LF
0225	02237	DITCHING	122,366.00	LF
0230	02242	WATER	1,000.00	MGAL
0235	02363	GUARDRAIL CONNECTOR TO BRIDGE END TY A	8.00	EACH
0240	02365	CRASH CUSHION TYPE IX-A	4.00	EACH
0245	02367	GUARDRAIL END TREATMENT TYPE 1	4.00	EACH
0250	02369	GUARDRAIL END TREATMENT TYPE 2A	60.00	EACH
0255	02381	REMOVE GUARDRAIL	57,300.00	LF
0260	02387	GUARDRAIL CONNECTOR TO BRIDGE END TY A-1	4.00	EACH
0265	02391	GUARDRAIL END TREATMENT TYPE 4A	58.00	EACH
0270	02483	CHANNEL LINING CLASS II	695.00	TON
0275	02562	TEMPORARY SIGNS	1,712.00	SQFT
0280	02565	OBJECT MARKER TYPE 2	16.00	EACH
0285	02596	FABRIC-GEOTEXTILE TYPE I	1,390.00	SQYD
0290	02599	FABRIC-GEOTEXTILE TYPE IV	200.00	SQYD
0295	02650	MAINTAIN & CONTROL TRAFFIC - (OHIO COUNTY)	1.00	LS
0300	02671	PORTABLE CHANGEABLE MESSAGE SIGN	4.00	EACH
0305	02676	MOBILIZATION FOR MILL & TEXT - (OHIO COUNTY)	1.00	LS
0310	02677	ASPHALT PAVE MILLING & TEXTURING	36,842.00	TON
0315	02696	SHOULDER RUMBLE STRIPS	259,428.00	LF
0320	02701	TEMP SILT FENCE	8,920.00	LF
0325	02703	SILT TRAP TYPE A	16.00	EACH
0330	02704	SILT TRAP TYPE B	16.00	EACH
0335	02705	SILT TRAP TYPE C	16.00	EACH
0340	02705	SILT TRAP TYPE C	74.00	EACH
0345	02706	CLEAN SILT TRAP TYPE A	16.00	EACH
0350	02707	CLEAN SILT TRAP TYPE B	16.00	EACH
0355	02708	CLEAN SILT TRAP TYPE C	16.00	EACH
0360	02708	CLEAN SILT TRAP TYPE C	74.00	EACH
0365	02726	STAKING - (OHIO COUNTY)	1.00	LS
0370	02775	ARROW PANEL	5.00	EACH
0375	02898	RELOCATE CRASH CUSHION	8.00	EACH
0380	02929	CRASH CUSHION TYPE IX	6.00	EACH
0385	03171	CONCRETE BARRIER WALL TYPE 9T	4,360.00	LF
0390	03260	CLEAN ROADWAY DRAINS	9.00	EACH
0395	05950	EROSION CONTROL BLANKET	64,388.00	SQYD
0400	05952	TEMP MULCH	43,592.00	SQYD

MATERIAL SUMMARY

Project Line No	Bid Code	DESCRIPTION	Quantity	Unit
0405	05953	TEMP SEEDING AND PROTECTION	32,944.00	SQYD
0410	05963	INITIAL FERTILIZER	6.70	TON
0415	05964	20-10-10 FERTILIZER	3.60	TON
0420	05985	SEEDING AND PROTECTION	581.00	SQYD
0425	05992	AGRICULTURAL LIMESTONE	41.00	TON
0430	06511	PAVE STRIPING-TEMP PAINT-6 IN	72,300.00	LF
0435	06513	PAVE STRIPING-TEMP PAINT-12 IN	1,200.00	LF
0440	06515	PAVE STRIPING-PERM PAINT-6 IN	296,291.00	LF
0445	06517	PAVE STRIPING-PERM PAINT-12 IN	621.00	LF
0450	06569	PAVE MARKING-THERMO CROSS-HATCH	315.00	SQFT
0455	06572	PAVE MARKING-DOTTED LANE EXTEN	438.00	LF
0460	08500	APPROACH SLAB	333.33	SQYD
0465	08903	CRASH CUSHION TY VI CLASS BT TL3	4.00	EACH
0470	10020NS	FUEL ADJUSTMENT	108,872.00	DOLL
0475	10030NS	ASPHALT ADJUSTMENT	230,236.00	DOLL
0480	20071EC	JOINT ADHESIVE	247,104.00	LF
0485	20411ED	LAW ENFORCEMENT OFFICER	1,000.00	HOURL
0490	20758ED	REMOVE AND RESET PERF PIPE HEADWALL - (REPLACING)	785.00	EACH
0495	21597EN	REMOVE PERF PIPE HEADWALL - (DAMAGED)	200.00	EACH
0500	21802EN	G/R STEEL W BEAM-S FACE (7 FT POST)	57,300.00	LF
0505	22664EN	WATER BLASTING EXISTING STRIPE	51,280.00	LF
0510	22883EN	CONCRETE WEDGE CURB	16,750.00	LF
0515	23496EC	MEDIAN CROSSOVER REMOVAL - (MP 41.2)	1.00	EACH
0520	23496EC	MEDIAN CROSSOVER REMOVAL - (MP 42.30)	1.00	EACH
0525	23496EC	MEDIAN CROSSOVER REMOVAL - (MP 44.4)	1.00	EACH
0530	23496EC	MEDIAN CROSSOVER REMOVAL - (MP 50.9)	1.00	EACH
0535	23791EC	PAVE STRIPING-CHEVRON MARKINGS	8,850.00	SQFT
0540	24489EC	INLAID PAVEMENT MARKER	1,635.00	EACH
0545	24605ED	RELOCATE - (MEDIAN CROSSOVER/MEDIAN TURN- AROUND MP 57.7)	1.00	EACH
0550	24662EC	CLEAN - (AND INSPECT DROP BOX INLET)	74.00	EACH
0555	24906ED	REGRADE SLOPE	581.00	SQYD
0560	24979ED	REGRADE - (MEDIAN CROSSOVER MP 49.4)	1.00	EACH
0565	24979ED	REGRADE - (MEDIAN CROSSOVER MP 54.1)	1.00	EACH
0570	02998	MASONRY COATING	243.00	SQYD
0575	08504	EPOXY SAND SLURRY	105.00	SQYD
0580	08549	BLAST CLEANING	105.00	SQYD
0585	23032EN	BRIDGE BARRIER RETROFIT	544.00	LF
0590	02998	MASONRY COATING	243.00	SQYD
0595	08504	EPOXY SAND SLURRY	105.00	SQYD
0600	08549	BLAST CLEANING	105.00	SQYD
0605	23032EN	BRIDGE BARRIER RETROFIT	544.00	LF
0610	02998	MASONRY COATING	176.00	SQYD
0615	08504	EPOXY SAND SLURRY	73.00	SQYD
0620	08549	BLAST CLEANING	73.00	SQYD
0625	23032EN	BRIDGE BARRIER RETROFIT	387.00	LF
0630	02998	MASONRY COATING	176.00	SQYD
0635	08504	EPOXY SAND SLURRY	73.00	SQYD
0640	08549	BLAST CLEANING	73.00	SQYD
0645	23032EN	BRIDGE BARRIER RETROFIT	387.00	LF

MATERIAL SUMMARY

Project Line No	Bid Code	DESCRIPTION	Quantity	Unit
0650	04714	POLE 120 FT MTG HT HIGH MAST	4.00	EACH
0655	04820	TRENCHING AND BACKFILLING	7,850.00	LF
0660	04862	CABLE-NO. 4/3C DUCTED	8,150.00	LF
0665	20410ED	MAINTAIN LIGHTING - (OHIO COUNTY)	1.00	LS
0670	21543EN	BORE AND JACK CONDUIT	300.00	LF
0675	23161EN	POLE BASE-HIGH MAST	35.00	CUYD
0680	24749EC	HIGH MAST LED LUMINAIRE	98.00	EACH
0685	02568	MOBILIZATION	1.00	LS
0690	02569	DEMOBILIZATION	1.00	LS
0695	03262	CLEAN PIPE STRUCTURE - (ADDED: 5-18-18)	12.00	EACH
0700	04800	MARKER - (ADDED: 5-18-18)	28.00	EACH

PROPOSAL BID ITEMS

181212

Page 1 of 6

Report Date 5/18/18

Section: 0001 - PAVING

LINE	BID CODE	ALT	DESCRIPTION	QUANTITY	UNIT	UNIT PRIC	FP	AMOUNT
0010	00003		CRUSHED STONE BASE	21,982.00	TON		\$	
0020	00078		CRUSHED AGGREGATE SIZE NO 2	17,800.00	TON		\$	
0030	00100		ASPHALT SEAL AGGREGATE	111.00	TON		\$	
0040	00103		ASPHALT SEAL COAT	13.00	TON		\$	
0050	00212		CL2 ASPH BASE 1.00D PG64-22	1,195.00	TON		\$	
0060	00214		CL3 ASPH BASE 1.00D PG64-22 (REVISED: 5-18-18)	25,554.00	TON		\$	
0070	00216		CL3 ASPH BASE 1.00D PG76-22	7,306.00	TON		\$	
0080	00309		CL2 ASPH SURF 0.50D PG64-22	331.00	TON		\$	
0090	00332		CL3 ASPH SURF 0.50A PG76-22	72,177.00	TON		\$	
0100	00356		ASPHALT MATERIAL FOR TACK (REVISED: 5-18-18)	281.73	TON		\$	
0110	01000		PERFORATED PIPE-4 IN	960.00	LF		\$	
0120	01010		NON-PERFORATED PIPE-4 IN	128.00	LF		\$	
0130	01028		PERF PIPE HEADWALL TY 3-4 IN	32.00	EACH		\$	
0140	02677		ASPHALT PAVE MILLING & TEXTURING	123.00	TON		\$	
0150	20509ED		BLOW UP/RELIEF JOINT (A)	355.50	SQYD		\$	
0160	20509ED		BLOW UP/RELIEF JOINT (B)	184.86	SQYD		\$	
0170	20509ED		BLOW UP/RELIEF JOINT (C)	284.40	SQYD		\$	
0180	22861EN		HIGH STRENGTH GEOTEXTILE FABRIC TY V	84,150.00	SQYD		\$	

Section: 0002 - ROADWAY

LINE	BID CODE	ALT	DESCRIPTION	QUANTITY	UNIT	UNIT PRIC	FP	AMOUNT
0190	00078		CRUSHED AGGREGATE SIZE NO 2	2,074.00	TON		\$	
0200	00212		CL2 ASPH BASE 1.00D PG64-22 (REVISED: 5-18-18)	2,290.00	TON		\$	
0210	01000		PERFORATED PIPE-4 IN	14,030.00	LF		\$	
0220	01005		PERFORATED PIPE EDGE DRAIN-4 IN	470,641.00	LF		\$	
0230	01010		NON-PERFORATED PIPE-4 IN	39,853.00	LF		\$	
0240	01015		INSPECT & CERTIFY EDGE DRAIN SYSTEM (DAVISS COUNTY)	1.00	LS		\$	
0250	01015		INSPECT & CERTIFY EDGE DRAIN SYSTEM (OHIO COUNTY)	1.00	LS		\$	
0260	01020		PERF PIPE HEADWALL TY 1-4 IN	126.00	EACH		\$	
0270	01024		PERF PIPE HEADWALL TY 2-4 IN	126.00	EACH		\$	
0280	01028		PERF PIPE HEADWALL TY 3-4 IN (REPLACED DAMAGED)	93.00	EACH		\$	
0290	01028		PERF PIPE HEADWALL TY 3-4 IN (REPLACING DAMAGED)	93.00	EACH		\$	
0300	01310		REMOVE PIPE (EDGE DRAIN)	244,734.00	LF		\$	
0310	01310		REMOVE PIPE (EDGE DRAINS)	225,907.00	LF		\$	
0320	01502		DROP BOX INLET TYPE 5A	2.00	EACH		\$	
0330	01511		DROP BOX INLET TYPE 5D	5.00	EACH		\$	

PROPOSAL BID ITEMS

REVISED ADDENDUM #1: 5-18-18

181212

Page 2 of 6

Report Date 5/18/18

LINE	BID CODE	ALT	DESCRIPTION	QUANTITY	UNIT	UNIT PRIC	FP	AMOUNT
0340	01690		FLUME INLET TYPE 1	7.00	EACH		\$	
0350	01691		FLUME INLET TYPE 2	51.00	EACH		\$	
0360	01740		CORED HOLE DRAINAGE BOX CON-4 IN	3.00	EACH		\$	
0370	01890		ISLAND HEADER CURB TYPE 1	750.00	LF		\$	
0380	01982		DELINEATOR FOR GUARDRAIL MONO DIRECTIONAL WHITE	2,222.00	EACH		\$	
0390	01983		DELINEATOR FOR GUARDRAIL MONO DIRECTIONAL YELLOW	164.00	EACH		\$	
0400	01984		DELINEATOR FOR BARRIER - WHITE	130.00	EACH		\$	
0410	01985		DELINEATOR FOR BARRIER - YELLOW	120.00	EACH		\$	
0420	02003		RELOCATE TEMP CONC BARRIER	9,540.00	LF		\$	
0430	02014		BARRICADE-TYPE III	22.00	EACH		\$	
0440	02091		REMOVE PAVEMENT	36,447.00	SQYD		\$	
0450	02159		TEMP DITCH	15,840.00	LF		\$	
0460	02160		CLEAN TEMP DITCH	7,920.00	LF		\$	
0470	02165		REMOVE PAVED DITCH	2,000.00	SQYD		\$	
0480	02200		ROADWAY EXCAVATION	8,170.00	CUYD		\$	
0490	02223		GRANULAR EMBANKMENT	150.00	CUYD		\$	
0500	02237		DITCHING	241,325.00	LF		\$	
0510	02242		WATER	2,000.00	MGAL		\$	
0520	02363		GUARDRAIL CONNECTOR TO BRIDGE END TY A	32.00	EACH		\$	
0530	02365		CRASH CUSHION TYPE IX-A	16.00	EACH		\$	
0540	02367		GUARDRAIL END TREATMENT TYPE 1	14.00	EACH		\$	
0550	02369		GUARDRAIL END TREATMENT TYPE 2A	109.00	EACH		\$	
0560	02381		REMOVE GUARDRAIL	116,150.00	LF		\$	
0570	02387		GUARDRAIL CONNECTOR TO BRIDGE END TY A-1	16.00	EACH		\$	
0580	02391		GUARDRAIL END TREATMENT TYPE 4A	97.00	EACH		\$	
0590	02483		CHANNEL LINING CLASS II	1,390.00	TON		\$	
0600	02545		CLEARING AND GRUBBING (APPROXIMATELY 0.5 ACRES, DAVIESS COUNTY)	1.00	LS		\$	
0610	02562		TEMPORARY SIGNS	3,224.00	SQFT		\$	
0620	02565		OBJECT MARKER TYPE 2	40.00	EACH		\$	
0630	02596		FABRIC-GEOTEXTILE TYPE I	2,780.00	SQYD		\$	
0640	02599		FABRIC-GEOTEXTILE TYPE IV	300.00	SQYD		\$	
0650	02650		MAINTAIN & CONTROL TRAFFIC (DAVIESS COUNTY)	1.00	LS		\$	
0660	02650		MAINTAIN & CONTROL TRAFFIC (OHIO COUNTY)	1.00	LS		\$	
0670	02671		PORTABLE CHANGEABLE MESSAGE SIGN	8.00	EACH		\$	
0680	02676		MOBILIZATION FOR MILL & TEXT (DAVIESS COUNTY)	1.00	LS		\$	
0690	02676		MOBILIZATION FOR MILL & TEXT (OHIO COUNTY)	1.00	LS		\$	
0700	02677		ASPHALT PAVE MILLING & TEXTURING	70,854.00	TON		\$	
0710	02696		SHOULDER RUMBLE STRIPS	486,535.00	LF		\$	
0720	02701		TEMP SILT FENCE	18,140.00	LF		\$	
0730	02703		SILT TRAP TYPE A	29.00	EACH		\$	
0740	02704		SILT TRAP TYPE B	31.00	EACH		\$	
0750	02705		SILT TRAP TYPE C	171.00	EACH		\$	

PROPOSAL BID ITEMS

REVISED ADDENDUM #1: 5-18-18

181212

Page 3 of 6

Report Date 5/18/18

LINE	BID CODE	ALT	DESCRIPTION	QUANTITY	UNIT	UNIT PRIC	FP	AMOUNT
0760	02706		CLEAN SILT TRAP TYPE A	29.00	EACH		\$	
0770	02707		CLEAN SILT TRAP TYPE B	31.00	EACH		\$	
0780	02708		CLEAN SILT TRAP TYPE C	171.00	EACH		\$	
0790	02726		STAKING (DAVIESS COUNTY)	1.00	LS		\$	
0800	02726		STAKING (OHIO COUNTY)	1.00	LS		\$	
0810	02775		ARROW PANEL	8.00	EACH		\$	
0820	02898		RELOCATE CRASH CUSHION	14.00	EACH		\$	
0830	02929		CRASH CUSHION TYPE IX	18.00	EACH		\$	
0840	03171		CONCRETE BARRIER WALL TYPE 9T	8,800.00	LF		\$	
0850	03260		CLEAN ROADWAY DRAINS	18.00	EACH		\$	
0855	03262		CLEAN PIPE STRUCTURE (ADDED: 5-18-18)	23.00	EACH		\$	
0860	05950		EROSION CONTROL BLANKET	124,052.00	SQYD		\$	
0870	05952		TEMP MULCH	87,026.00	SQYD		\$	
0880	05953		TEMP SEEDING AND PROTECTION	63,142.00	SQYD		\$	
0890	05963		INITIAL FERTILIZER	12.94	TON		\$	
0900	05964		20-10-10 FERTILIZER	6.99	TON		\$	
0910	05985		SEEDING AND PROTECTION	4,776.00	SQYD		\$	
0920	05992		AGRICULTURAL LIMESTONE	44.93	TON		\$	
0930	06511		PAVE STRIPING-TEMP PAINT-6 IN	141,970.00	LF		\$	
0940	06513		PAVE STRIPING-TEMP PAINT-12 IN	1,200.00	LF		\$	
0950	06515		PAVE STRIPING-PERM PAINT-6 IN	553,291.00	LF		\$	
0960	06517		PAVE STRIPING-PERM PAINT-12 IN	2,636.00	LF		\$	
0970	06569		PAVE MARKING-THERMO CROSS-HATCH	315.00	SQFT		\$	
0980	06572		PAVE MARKING-DOTTED LANE EXTEN	438.00	LF		\$	
0990	08500		APPROACH SLAB	333.33	SQYD		\$	
1000	08500		APPROACH SLAB (BRIDGE MP 64.5)	333.33	SQYD		\$	
1010	08500		APPROACH SLAB (BRIDGE MP 64.8)	333.33	SQYD		\$	
1020	08500		APPROACH SLAB (BRIDGE MP 65.0)	333.33	SQYD		\$	
1030	08903		CRASH CUSHION TY VI CLASS BT TL3	11.00	EACH		\$	
1040	10020NS		FUEL ADJUSTMENT	165,650.00	DOLL	\$1.00	\$	\$165,650.00
1050	10030NS		ASPHALT ADJUSTMENT	372,846.00	DOLL	\$1.00	\$	\$372,846.00
1060	20071EC		JOINT ADHESIVE	474,355.00	LF		\$	
1070	20411ED		LAW ENFORCEMENT OFFICER	2,000.00	HOURL		\$	
1080	20758ED		REMOVE AND RESET PERF PIPE HEADWALL	725.00	EACH		\$	
1090	20758ED		REMOVE AND RESET PERF PIPE HEADWALL (REPLACING)	785.00	EACH		\$	
1100	21597EN		REMOVE PERF PIPE HEADWALL (DAMAGED)	380.00	EACH		\$	
1110	21802EN		G/R STEEL W BEAM-S FACE (7 FT POST)	116,150.00	LF		\$	
1120	22664EN		WATER BLASTING EXISTING STRIPE	100,520.00	LF		\$	
1130	22883EN		CONCRETE WEDGE CURB	22,975.00	LF		\$	
1140	23496EC		MEDIAN CROSSOVER REMOVAL (MP 41.2)	1.00	EACH		\$	
1150	23496EC		MEDIAN CROSSOVER REMOVAL (MP 42.30)	1.00	EACH		\$	

PROPOSAL BID ITEMS

181212

Page 4 of 6

Report Date 5/18/18

LINE	BID CODE	ALT	DESCRIPTION	QUANTITY	UNIT	UNIT PRIC	FP	AMOUNT
1160	23496EC		MEDIAN CROSSOVER REMOVAL (MP 44.4)	1.00	EACH		\$	
1170	23496EC		MEDIAN CROSSOVER REMOVAL (MP 50.9)	1.00	EACH		\$	
1180	23496EC		MEDIAN CROSSOVER REMOVAL (MP 67.0)	1.00	EACH		\$	
1190	23496EC		MEDIAN CROSSOVER REMOVAL (MP 68.2)	1.00	EACH		\$	
1200	23496EC		MEDIAN CROSSOVER REMOVAL (MP 72.0)	1.00	EACH		\$	
1210	23791EC		PAVE STRIPING-CHEVRON MARKINGS	8,850.00	SQFT		\$	
1220	24489EC		INLAID PAVEMENT MARKER	3,056.00	EACH		\$	
1230	24605ED		RELOCATE (MEDIAN CROSSOVER/MEDIAN TURN-AROUND MP 57.7)	1.00	EACH		\$	
1240	24662EC		CLEAN (AND INSPECT DROP BOX INLET)	74.00	EACH		\$	
1250	24662EC		CLEAN (AND INSPECT DROP BOX INLETS)	68.00	EACH		\$	
1260	24906ED		REGRADE SLOPE	1,118.00	SQYD		\$	
1270	24979ED		REGRADE (MEDIAN CROSSOVER MP 49.4)	1.00	EACH		\$	
1280	24979ED		REGRADE (MEDIAN CROSSOVER MP 54.1)	1.00	EACH		\$	
1290	24979ED		REGRADE (MEDIAN TURN-AROUND/CROSSOVER MP 61.6)	1.00	EACH		\$	
1300	24984EC		TRANSVERSE IN-LANE RUMBLE STRIPS	6.00	EACH		\$	

Section: 0003 - BRIDGE - S. FORK PANTHER CREEK - NB - 030B00089R - MP 64.83

LINE	BID CODE	ALT	DESCRIPTION	QUANTITY	UNIT	UNIT PRIC	FP	AMOUNT
1310	02998		MASONRY COATING	156.00	SQYD		\$	
1320	08504		EPOXY SAND SLURRY	66.00	SQYD		\$	
1330	08549		BLAST CLEANING	66.00	SQYD		\$	
1340	23032EN		BRIDGE BARRIER RETROFIT	347.00	LF		\$	

Section: 0004 - BRIDGE - S. FORK PANTHER CREEK - SB- 030B00088L - MP 64.49

LINE	BID CODE	ALT	DESCRIPTION	QUANTITY	UNIT	UNIT PRIC	FP	AMOUNT
1350	02998		MASONRY COATING	182.00	SQYD		\$	
1360	08504		EPOXY SAND SLURRY	74.00	SQYD		\$	
1370	08549		BLAST CLEANING	74.00	SQYD		\$	
1380	23032EN		BRIDGE BARRIER RETROFIT	399.00	LF		\$	

Section: 0005 - BRIDGE - ROUGH RIVER - SB - 092B00063L - MP 51.49

LINE	BID CODE	ALT	DESCRIPTION	QUANTITY	UNIT	UNIT PRIC	FP	AMOUNT
1390	02998		MASONRY COATING	243.00	SQYD		\$	

PROPOSAL BID ITEMS

REVISED ADDENDUM #1: 5-18-18

181212

Page 5 of 6

Report Date 5/18/18

LINE	BID CODE	ALT	DESCRIPTION	QUANTITY	UNIT	UNIT PRIC	FP	AMOUNT
1400	08504		EPOXY SAND SLURRY	105.00	SQYD		\$	
1410	08549		BLAST CLEANING	105.00	SQYD		\$	
1420	23032EN		BRIDGE BARRIER RETROFIT	544.00	LF		\$	

Section: 0006 - BRIDGE - S. FORK PANTHER CREEK - NB - 030B00088R - MP 64.49

LINE	BID CODE	ALT	DESCRIPTION	QUANTITY	UNIT	UNIT PRIC	FP	AMOUNT
1430	02998		MASONRY COATING	182.00	SQYD		\$	
1440	08504		EPOXY SAND SLURRY	74.00	SQYD		\$	
1450	08549		BLAST CLEANING	74.00	SQYD		\$	
1460	23032EN		BRIDGE BARRIER RETROFIT	399.00	LF		\$	

Section: 0007 - BRIDGE - ROUGH RIVER- NB - 092B00063R - MP 51.49

LINE	BID CODE	ALT	DESCRIPTION	QUANTITY	UNIT	UNIT PRIC	FP	AMOUNT
1470	02998		MASONRY COATING	243.00	SQYD		\$	
1480	08504		EPOXY SAND SLURRY	105.00	SQYD		\$	
1490	08549		BLAST CLEANING	105.00	SQYD		\$	
1500	23032EN		BRIDGE BARRIER RETROFIT	544.00	LF		\$	

Section: 0008 - BRIDGE - S. FORK PANTHER CREEK - SB - 030B00089L - MP 64.83

LINE	BID CODE	ALT	DESCRIPTION	QUANTITY	UNIT	UNIT PRIC	FP	AMOUNT
1510	02998		MASONRY COATING	156.00	SQYD		\$	
1520	08504		EPOXY SAND SLURRY	66.00	SQYD		\$	
1530	08549		BLAST CLEANING	66.00	SQYD		\$	
1540	23032EN		BRIDGE BARRIER RETROFIT	347.00	LF		\$	

Section: 0009 - BRIDGE - KY 764 - SB - 092B00067L - MP 60.33

LINE	BID CODE	ALT	DESCRIPTION	QUANTITY	UNIT	UNIT PRIC	FP	AMOUNT
1550	02998		MASONRY COATING	176.00	SQYD		\$	
1560	08504		EPOXY SAND SLURRY	73.00	SQYD		\$	
1570	08549		BLAST CLEANING	73.00	SQYD		\$	
1580	23032EN		BRIDGE BARRIER RETROFIT	387.00	LF		\$	

Section: 0010 - BRIDGE - KY 764 - NB - 092B00067R - MP 60.33

LINE	BID CODE	ALT	DESCRIPTION	QUANTITY	UNIT	UNIT PRIC	FP	AMOUNT
1590	02998		MASONRY COATING	176.00	SQYD		\$	
1600	08504		EPOXY SAND SLURRY	73.00	SQYD		\$	
1610	08549		BLAST CLEANING	73.00	SQYD		\$	
1620	23032EN		BRIDGE BARRIER RETROFIT	387.00	LF		\$	

PROPOSAL BID ITEMS

181212

Report Date 5/18/18

Section: 0011 - BRIDGE - S. FORK PANTHER CREEK -SB - 030B00090L - MP 65.02

LINE	BID CODE	ALT	DESCRIPTION	QUANTITY	UNIT	UNIT PRIC	FP	AMOUNT
1630	02998		MASONRY COATING	156.00	SQYD		\$	
1640	08504		EPOXY SAND SLURRY	66.00	SQYD		\$	
1650	08549		BLAST CLEANING	66.00	SQYD		\$	
1660	23032EN		BRIDGE BARRIER RETROFIT	347.00	LF		\$	

Section: 0012 - BRIDGE - S. FORK PANTHER CREEK - NB - 030B00090R - MP 65.02

LINE	BID CODE	ALT	DESCRIPTION	QUANTITY	UNIT	UNIT PRIC	FP	AMOUNT
1670	02998		MASONRY COATING	156.00	SQYD		\$	
1680	08504		EPOXY SAND SLURRY	66.00	SQYD		\$	
1690	08549		BLAST CLEANING	66.00	SQYD		\$	
1700	23032EN		BRIDGE BARRIER RETROFIT	347.00	LF		\$	

Section: 0013 - LIGHTING

LINE	BID CODE	ALT	DESCRIPTION	QUANTITY	UNIT	UNIT PRIC	FP	AMOUNT
1710	04700		POLE 30 FT MTG HT	1.00	EACH		\$	
1720	04714		POLE 120 FT MTG HT HIGH MAST	4.00	EACH		\$	
1730	04721		BRACKET 6 FT	1.00	EACH		\$	
1740	04740		POLE BASE	1.00	EACH		\$	
1750	04750		TRANSFORMER BASE	1.00	EACH		\$	
1755	04780		FUSED CONNECTOR KIT (ADDED: 5-18-18)	156.00	EACH		\$	
1760	04793		CONDUIT-1 1/4 IN	12,310.00	LF		\$	
1765	04800		MARKER (ADDED: 5-18-18)	28.00	EACH		\$	
1770	04820		TRENCHING AND BACKFILLING	20,160.00	LF		\$	
1780	04834		WIRE-NO. 6	38,580.00	LF		\$	
1790	04862		CABLE-NO. 4/3C DUCTED	8,150.00	LF		\$	
1800	20391NS835		ELECTRICAL JUNCTION BOX TYPE A	8.00	EACH		\$	
1810	20410ED		MAINTAIN LIGHTING (DAVISS COUNTY)	1.00	LS		\$	
1820	20410ED		MAINTAIN LIGHTING (OHIO COUNTY)	1.00	LS		\$	
1830	21543EN		BORE AND JACK CONDUIT	610.00	LF		\$	
1840	23161EN		POLE BASE-HIGH MAST	35.00	CUYD		\$	
1850	24589ED		LED LUMINAIRE	74.00	EACH		\$	
1860	24749EC		HIGH MAST LED LUMINAIRE	98.00	EACH		\$	

Section: 0014 - DEMOBILIZATION &/OR MOBILIZATION

LINE	BID CODE	ALT	DESCRIPTION	QUANTITY	UNIT	UNIT PRIC	FP	AMOUNT
1870	02568		MOBILIZATION	1.00	LS		\$	
1880	02569		DEMOBILIZATION	1.00	LS		\$	